

Using ancient DNA to study the origins and dispersal of ancestral Polynesian chickens across the Pacific

Vicki A. Thomson^a, Ophélie Lebrasseur^b, Jeremy J. Austin^{a,c,1}, Terry L. Hunt^{d,e}, David A. Burney^f, Tim Denham^g, Nicolas J. Rawlence^{a,h}, Jamie R. Woodⁱ, Jaime Gongora^j, Linus Girdland Flink^{b,k}, Anna Linderholm^b, Keith Dobney^l, Greger Larson^b, and Alan Cooper^{a,1}

^aAustralian Centre for Ancient DNA, School of Earth and Environmental Sciences, University of Adelaide, Adelaide, SA 5005, Australia; ^bDurham Evolution and Ancient DNA, Department of Archaeology, and ^kSchool of Biological and Biomedical Sciences, Durham University, Durham DH1 3LE, United Kingdom; ^cSciences Department, Museum Victoria, Melbourne, VIC 3001, Australia; ^dClark Honors College and ^eDepartment of Anthropology, University of Oregon, Eugene, OR 97403; ^fNational Tropical Botanical Garden, Kalaheo, HI 96741; ^gSchool of Archaeology and Anthropology, ANU College of Arts and Social Sciences, The Australian National University, Canberra, ACT 0200, Australia; ^hAllan Wilson Centre for Molecular Ecology and Evolution, Department of Zoology, University of Otago, Dunedin 9016, New Zealand; ⁱLandcare Research, Lincoln 7640, New Zealand; ^jFaculty of Veterinary Science, University of Sydney, Sydney, NSW 2006, Australia; and ^lDepartment of Archaeology, University of Aberdeen, Aberdeen AB24 3UF, Scotland

Edited by David J. Meltzer, Southern Methodist University, Dallas, TX, and approved February 20, 2014 (received for review October 31, 2013)

The human colonization of Remote Oceania remains one of the great feats of exploration in history, proceeding east from Asia across the vast expanse of the Pacific Ocean. Human commensal and domesticated species were widely transported as part of this diaspora, possibly as far as South America. We sequenced mitochondrial control region DNA from 122 modern and 22 ancient chicken specimens from Polynesia and Island Southeast Asia and used these together with Bayesian modeling methods to examine the human dispersal of chickens across this area. We show that specific techniques are essential to remove contaminating modern DNA from experiments, which appear to have impacted previous studies of Pacific chickens. In contrast to previous reports, we find that all ancient specimens and a high proportion of the modern chickens possess a group of unique, closely related haplotypes found only in the Pacific. This group of haplotypes appears to represent the authentic founding mitochondrial DNA chicken lineages transported across the Pacific, and allows the early dispersal of chickens across Micronesia and Polynesia to be modeled. Importantly, chickens carrying this genetic signature persist on several Pacific islands at high frequencies, suggesting that the original Polynesian chicken lineages may still survive. No early South American chicken samples have been detected with the diagnostic Polynesian mtDNA haplotypes, arguing against reports that chickens provide evidence of Polynesian contact with pre-European South America. Two modern specimens from the Philippines carry haplotypes similar to the ancient Pacific samples, providing clues about a potential homeland for the Polynesian chicken.

Lapita | Pacific colonization | phylogeography | archaeology | migration

The colonization of the remote Pacific was one of the last great human migrations, but despite the recent nature of the events, the timing and routes remain an area of considerable debate. The first colonization of Western Polynesia occurred around 3,250–3,100 calendar years before present (cal B.P.) as part of the eastward migration of Lapita pottery-bearing peoples (1). This migration occurred only a few hundred years after the emergence of this distinctive pottery tradition in the Bismarck Archipelago around 3,470–3,250 cal B.P., although its antecedents can be traced to Island Southeast Asia (ISEA) (2–5). Following the initial movement into Western Polynesia, a prolonged 1,800-y hiatus, or “pause,” is apparent before further colonization (6), potentially relating to the need to develop sailing technology essential for crossing the vast ocean barrier to the east (between Samoa and the Society Islands, 2,400 km; Fig. 1). The huge navigational achievement of colonizing the remote East Polynesian triangle (an oceanic region roughly the size of North America) then occurred rapidly (<300 y) (6). Although the overall chronology of the eastern Pacific island colonization has recently been further

resolved, the precise details of this intensive migratory episode remain unclear (6).

Human commensal and early domesticated species were widely, but not ubiquitously, dispersed as people colonized the Pacific. As a result, they provide an opportunity to study colonization events and subsequent movements for islands and regions where they were successfully introduced, especially through the use of biomolecular techniques, including ancient DNA. In the Asia-Pacific region, the complex histories of Pacific island colonizations have been investigated using the biological elements associated with these cultures, such as bottle gourds (7, 8), sweet potatoes (9), pigs (10, 11), dogs (12), Pacific rats (13), and chickens (14–17). However, studies of commensals and domesticates in the Pacific to date have provided limited resolution of dispersal routes, due to low amounts of genetic diversity in many groups and overwriting of genetic signals by subsequent introductions, especially for cotransported species like rats (10, 13, 18).

Ancient and modern DNA from chickens provide an opportunity to study human-mediated dispersal across the Pacific due to the extent of genetic and phenotypic diversity and the range of archaeological material available. Although recent studies of

Significance

Ancient DNA sequences from chickens provide an opportunity to study their human-mediated dispersal across the Pacific due to the significant genetic diversity and range of archaeological material available. We analyze ancient and modern material and reveal that previous studies have been impacted by contamination with modern chicken DNA and, that as a result, there is no evidence for Polynesian dispersal of chickens to pre-Columbian South America. We identify genetic markers of authentic ancient Polynesian chickens and use them to model early chicken dispersals across the Pacific. We find connections between chickens in the Micronesian and Bismarck Islands, but no evidence these were involved in dispersals further east. We also find clues about the origins of Polynesian chickens in the Philippines.

Author contributions: V.A.T., J.J.A., J.G., and A.C. designed research; V.A.T., O.L., N.J.R., J.R.W., L.G.F., and A.L. performed research; T.L.H., D.A.B., and K.D. contributed new reagents/analytic tools; V.A.T., J.J.A., and A.C. analyzed data; and V.A.T., J.J.A., T.D., G.L., and A.C. wrote the paper.

The authors declare no conflict of interest.

This article is a PNAS Direct Submission.

Data deposition: The sequences reported in this paper have been deposited in the GenBank database (accession nos. [KJ000585–KJ000642](https://doi.org/10.1073/pnas.1320412111)).

¹To whom correspondence may be addressed. E-mail: alan.cooper@adelaide.edu.au or jeremy.austin@adelaide.edu.au.

This article contains supporting information online at www.pnas.org/lookup/suppl/doi:10.1073/pnas.1320412111/-DCSupplemental.

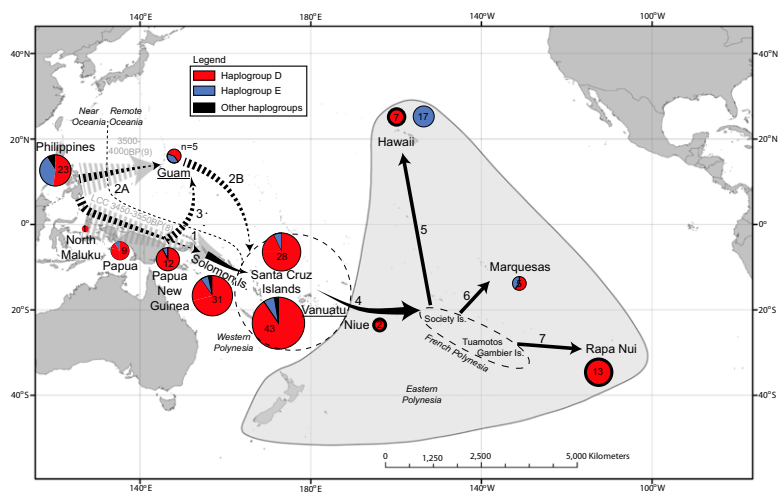


Fig. 1. Map showing samples and localities mentioned in this study. Samples from Vanuatu and Guam previously published in Dancause et al. (26) are underlined, with haplogroup frequencies of the chicken specimens indicated by pie charts (thick outlines indicate ancient samples). Colors refer to haplotype/haplogroup: D haplogroup in red, E haplogroup in blue, and all other haplotypes are in black. Gray arrows represent movements inferred from archaeological data (49), whereas black arrows represent routes tested in BayeSSC analysis (dashed arrows indicate movements tested in different scenarios, whereas solid arrows are constant across the different scenarios). 1, introduction of chickens within Near Oceania; 2, alternate hypothesis proposed by (38); 3, introduction of chickens from New Guinea into Micronesia; 4–7, spread of chickens from Western Polynesia into, and within, Eastern Polynesia. Dashed line indicates demarcation between Near and Remote Oceania, Western Polynesia is defined by a dashed circle, and Eastern Polynesia is indicated by a gray shaded triangle.

domestic chicken breeds have highlighted how the domestication process and subsequent breeding have resulted in a 70% loss of nuclear genetic diversity (19), substantial phylogeographic structure remains within the mitochondrial (mtDNA) sequences of chickens worldwide (20–23). Furthermore, an extensive reference dataset of >3,000 mtDNA control region (CR) sequences and >60 whole mtDNA genomes is available from across the natural range of wild and semiwild birds, as well as domestic breeds of chicken, permitting the reconstruction of phylogeographic patterns of domestic chickens and associated human cultures. Despite these intensive surveys, a resolved worldwide chicken mtDNA phylogeny has not been developed, and this is an essential prerequisite to interpreting short ancient DNA sequences. The current phylogenetic framework for chickens is based on Liu et al. (24), who identified nine highly divergent haplogroups (designated A–I) using mtDNA CR sequences, with an additional four recently described on the basis of whole mtDNA genomes (W–Z) (25). However, there is little information about the support for these topologies, and only neighbor-joining trees have been reported to date.

Phylogeographic studies have identified that one particular mtDNA lineage (CR haplogroup D) is largely limited to the Asia–Pacific region (24), whereas many of the other haplogroups are ubiquitous worldwide, potentially as a result of historical dispersal with European colonialists (e.g., haplogroups A, B, and E), and are therefore generally phylogeographically uninformative. Previous studies of modern and ancient chickens have identified both haplogroup D and E in the Pacific (14–17, 26), making interpretation of colonization history difficult due to potentially contrasting origins and dispersal histories (24). Indeed, the presence of haplogroup E in the Pacific has been used to infer a link between Polynesia and pre-Columbian South America, although both the phylogenetic signal and radiocarbon dating of the samples have been questioned (27–29). This issue has recently taken on more significance as other studies of ancient genetic diversity in South America emphasize the importance of evidence for pre-European Polynesian contact (17, 30).

In this study, we first quantify the support for previously defined chicken mtDNA CR haplogroups using recently published whole mitochondrial genomes (WMGs) (25). We then use the resulting robust evolutionary framework to analyze the spatial and temporal patterns of mtDNA CR haplotypes in ancient and modern Pacific chickens to examine their origins in ISEA (31), the dispersal of chickens into Near Oceania and Western Polynesia, potential connections between the New Guinea region and Micronesia, and the claimed introduction of Polynesian chickens to South America (14).

Results

The 61 WMG dataset (25) contained 363 single-nucleotide polymorphisms (SNPs), of which 154 were potentially phylogenetically informative, with 62 (17%) located in the rapidly evolving CR (32). Bayesian and maximum likelihood inference analyses of the WMG dataset supported the haplogroup framework defined by Liu et al. (24) and Miao et al. (25) and, importantly, produced robust support for haplogroups A–G and Z (i.e., haplogroups where multiple individuals were sequenced), as shown in Fig. 2. Robust support values were also obtained for phylogenetic trees based on the WMG data without the CR sequences (*SI Appendix, Fig. S1*), but were less robust when based only on the highly variable CR sequences alone, likely due to issues with substitution rate heterogeneity (32) (*SI Appendix, Fig. S2*). However, the short (201 bp), hypervariable region of the CR used in previous studies contains >12× the average diversity per base compared with the rest of the WMG, and has the advantage of being available for a worldwide dataset of >1,000 chicken sequences. The comparative phylogenetic dataset constructed from these sequences identified 274 unique haplotypes, which we termed H001–H274 (*SI Appendix, Dataset S6*).

Of the 37 Polynesian archaeological chicken bones analyzed to study the temporal and spatial patterns within Polynesia, 22 (59%) yielded positive and repeatable PCR amplification and DNA sequencing results for a 330 bp region (which included the hypervariable 201 bp; Niue, $n = 2/8$; Hawai'i, $n = 7/11$; Rapa Nui, $n = 13/18$; *SI Appendix, Table S1*). All of the 22 positive ancient samples produced mtDNA CR sequences belonging to haplogroup D. Two samples that could not be reliably reproduced (from Niue and Rapa Nui) each generated a single PCR product with different non-D haplotypes (from haplogroup A and E, respectively; *SI Appendix, Table S1 and Dataset S1*). However, when DNase (double-strand-specific Shrimp DNase) pretreatment was used to remove potential contaminating DNA from reagents (33), these sequences were no longer detected (*SI Appendix*). Two of the 124 modern feather samples examined could not be successfully amplified (one from the Marquesas and another from Hawai'i). The large majority of the resulting 122 modern sequences belonged to haplogroup D ($n = 90/122$, 74%; *SI Appendix, Figs. S3–S7*), with haplogroup E sequences present at a lower frequency ($n = 27/122$, 22%). The remaining five samples fell within haplogroups A, B, and I ($n = 1, 3$, and 1, respectively, each <2.5%).

Previous studies of Pacific chickens have reported elevated levels of haplogroup E among ancient specimens (up to 48%) (14–16), in direct contrast to our results. However, the contamination of laboratory consumables with DNA from modern domestic species, including chickens, is a well-known problem in ancient DNA research (34), and this would also likely generate

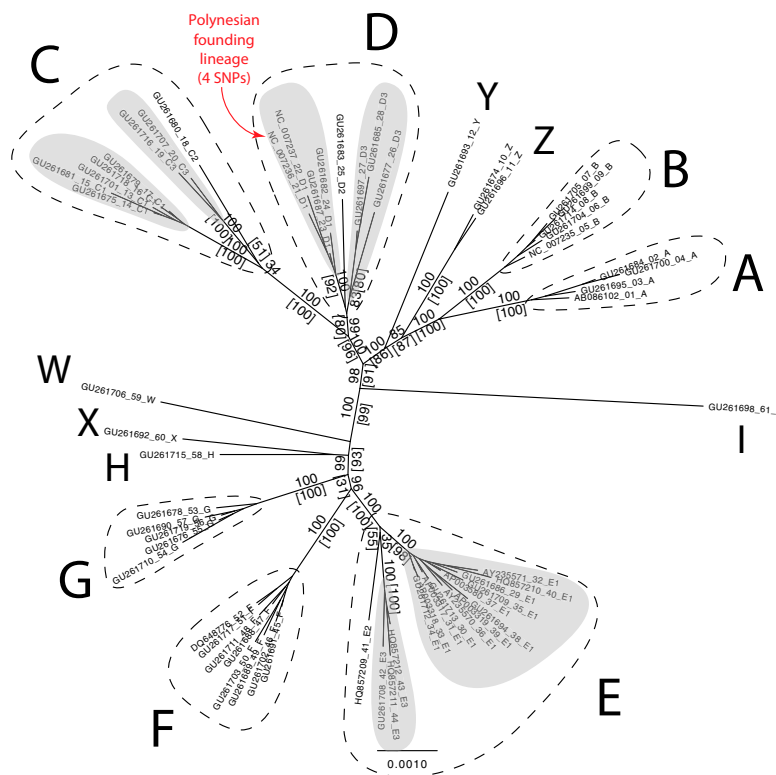


Fig. 2. Phylogenetic tree based on WMG data from Miao et al. (25). Bayesian posterior probability and maximum likelihood bootstrap (in parentheses) support values are shown on branches. All haplogroups with more than one individual have robust support and concur with the designations of Liu et al. (24).

haplogroup E sequences, due to the ubiquity of the latter worldwide (*SI Appendix, Dataset S2*) (24). To examine this potential explanation, we reexamined key samples from a previous study that linked ancient Polynesian chickens to South American archaeological specimens (14). Four of the six bone samples from Rapa Nui used in the previous study were available for reexamination, but only three gave replicable results (*SI Appendix, Dataset S1*). However, these included the individual bone reported to have generated the critical single haplogroup E sequence (H268 of our unique haplotypes) used to link Rapa Nui and South America (sample PAQANA011; *SI Appendix, Fig. S8*) (14). In direct contrast to the previous results, our reanalysis of an independent sample of PAQANA011 using Shrimp DNase PCR pretreatment yielded a haplogroup D sequence (haplotype H239; *SI Appendix, Dataset S6*) identical to those of the other two Rapa Nui specimens we reexamined. This result was subsequently confirmed through independent replication of a subsample of the same specimen at Durham University (*SI Appendix, Dataset S3*).

Our results further revealed that the PAQANA011 specimen contained low amounts of DNA, with elevated levels of DNA template damage (*SI Appendix, Dataset S4*), and strongly suggests the previously reported haplogroup E sequence was the result of contamination with modern chicken DNA. A further 10 samples excavated from the same site on Rapa Nui (Anakena) were also examined, and all yielded replicable haplogroup D sequences (haplotype H239; *SI Appendix, Dataset S1*). Together with the haplogroup D results of the previous study (14), this means that all 15 different bones examined at the Anakena site have yielded H239 sequences.

To investigate the conflict between the results obtained here and those previously reported from ancient Pacific specimens (14–16), we calculated the probability of detecting the reported proportions of D and E haplogroups given the different datasets. If haplogroup E was authentically present within ancient Pacific chickens at the levels previously reported (48%) (14–16), then the probability that all 22 of our ancient samples would belong to haplogroup D is negligible (P value = 1.3×10^{-7}). In contrast,

our results suggest that if haplogroup E was present at all in ancient Pacific chickens, it must have been in less than 13% (at the 95% probability level; *SI Appendix, Fig. S9*). It is possible that if haplogroup E was present in very low frequencies among ancient Pacific chickens (e.g., <10%), we did not detect it within the 22 ancient samples we examined simply due to stochastic sampling effects (P value = 0.098). However, if E was actually present at only 10% in the ancient Pacific chickens, then it is also highly unlikely that haplogroup E sequences would have been detected in 15/31 (48%) of the specimens in previous studies (P value = 6.9×10^{-9}).

A median-joining network of the haplogroup D chicken sequences revealed that all of the ancient Pacific sequences generated in this study ($n = 22$) and those from previous studies ($n = 16$) (14, 16) together comprise only five different haplotypes (Fig. 3), none of which have been found outside the Pacific region. Four of these five are from Polynesia and cluster together, possessing a diagnostic motif of four SNPs (A → G at base 281, C → T at base 296, T → C at base 306, A → G at base 342 compared with NC_007235; *SI Appendix, Dataset S5*). The four diagnostic SNPs were also detected in four additional haplotypes within the diversity of sequences from modern chickens sampled across the western Pacific and the Philippines, but only from Vanuatu, Santa Cruz, Philippines, and Guam (Fig. 3) (26). Indeed one of the previously published WMGs, from the Philippines (NC_007236; 25), contains all four of these diagnostic SNPs (*SI Appendix, Figs. S1 and S2*). Fig. 3 shows that the most common ancient haplotype, H239, forms the central node from which the other three ancient Polynesian D haplotypes radiate, consistent with a recent rapid expansion. The central haplotype was also the most common sequence in modern Pacific chicken populations, being present on almost all Pacific islands sampled.

South America. Given that at least some of the previously reported ancient Pacific chicken data appear to be due to contamination, and the fact that all of the authenticated or reliable ancient Pacific chicken sequences are restricted to the unique

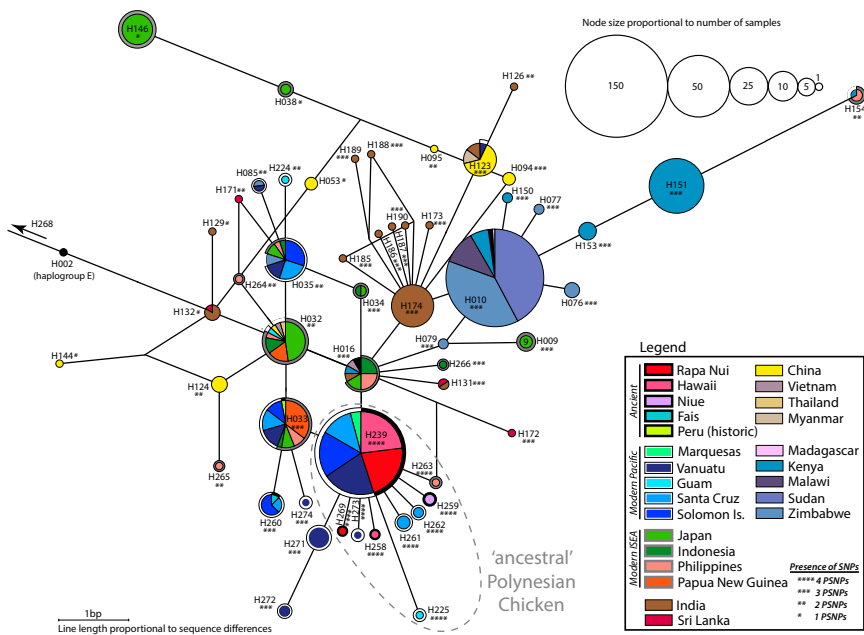


Fig. 3. Unrooted haplogroup D network generated using 201 bp of mitochondrial CR analyzed in this study, including 144 sequences generated in this study and 1,226 sequences from GenBank (14, 21–24, 26, 27, 43–46). Labels on nodes are unique haplotype numbers from this study (*SI Appendix, Dataset S6*). Colors reflect sampling location, with outline around pie charts representing ancient samples (black), modern Pacific (white), and modern ISEA (gray).

Pacific group of haplogroup D sequences, we performed approximate Bayesian coalescent simulations to evaluate the evidence for the pre-Columbian introduction of chickens to South America. The coalescent simulations provided no evidence to support prehistoric dispersal of chickens from Polynesia to South America either when the datasets included (i) ancient sequences only from haplogroup D or (ii) all sequences reported from ancient specimens (Haplogroups B, E, and D) (14–16) (*SI Appendix, Fig. S11 and Tables S2–S5*). The analyses reveal that the more likely route and explanation for South American chicken diversity appears to be via Europe and early historical introductions, or as modern DNA contamination of experiments (*SI Appendix, Fig. S11*). A single D haplotype sequence (H033) has been reported from post-European contact Peru (16), but this sequence is common within ISEA populations, and could have been associated with early-colonial Spanish trade. Importantly, it has not been found among the ancient Pacific chicken sequences.

Micronesia and Western Polynesia. To investigate early human-mediated dispersal patterns within the Asia–Pacific region, we examined modern chickens from islands across ISEA, Micronesia, and Western Polynesia, because few specimens of ancient chickens were available from this area [however, see Fais D haplotype sample from Storey et al. (16)]. Although the ISEA sequences are scattered across the haplogroup D network, the majority of haplotypes from modern Pacific chickens are genetically clustered together (H032–35, H085, H224–225, H260, H262, H271–274; Fig. 3). Within Micronesia, haplogroup D has been reported from modern chickens in Guam ($n = 3/5$; H032, H224, and H225; 26), although interestingly, these particular D haplotypes are not shared with any other Pacific island group. In fact, two of these haplotypes have only ever been found in Guam (H224 and H225), whereas the third Guam haplotype is shared with the Philippines, Japan, Indonesia, and Papua New Guinea (H032). The modern haplogroup D chickens in Guam do not appear to be significantly genetically differentiated from those in the Philippines, Japan, and Indonesia (*SI Appendix, Table S6*).

An investigation of the discordant haplogroup D lineages in Micronesia and Polynesia using coalescent simulations identified an early movement of chickens between New Guinea and Micronesia as the most likely of five models tested (*SI Appendix, Fig. S12 and Tables S7 and S8*). The simulations suggest that chickens were transported between Micronesia and islands in the Bismarck Sea off the coast of New Guinea and New Britain

around 3,850 years ago (ya), without further onward transportation of chickens into Western and Eastern Polynesia (*SI Appendix, Fig. S12*). In contrast, the origins of the chickens currently found in Polynesia appear to be via the standard southern route from New Guinea to the Solomon Islands, the Santa Cruz Islands, Vanuatu, and further eastward (Fig. 1, arrows 1 and 4–7, and *SI Appendix, Fig. S12*).

Discussion

Our results indicate that a small cluster of mtDNA haplogroup D sequences, defined by a diagnostic combination of four CR SNPs (which we term the “ancestral Polynesian motif”), represent the founding lineages of chickens transported as prehistoric domestics across the Pacific and ultimately ending up in Polynesia (i.e., “Polynesian chickens”). We suggest that the most common haplotype in ancient samples (H239) represents the core mtDNA lineage of Polynesian chickens, and that the one- or two-step derivatives in ancient Pacific island specimens (Fig. 3) represent in situ evolution following colonization. This hypothesis is supported by the geographic distribution of the ancient daughter lineages, which are unique to each Pacific island group, and the elevated frequency of lineages with the four diagnostic SNPs in the eastern Pacific (*SI Appendix, Fig. S10*). Although mtDNA is maternally inherited as a single genetic locus, limiting the ability to recover complex colonization histories, our data establish clear hypotheses that can be tested with genomic data from both modern and ancient chickens, and other groups such as humans, commensals, and other domesticates. It is important to note that in situations like the Pacific, phylogeographic signals in domestic species are likely to represent processes of initial human dispersal and later trade patterns.

Our findings contrast substantially with previous studies (14–16), which we suggest stems from our strict adherence to contamination reduction measures—for example, the use of Shrimp DNase. By removing a key source of potential contamination with domestic chicken DNA (PCR reagents), the use of Shrimp DNase has allowed us to recharacterize the crucial ancient Rapa Nui sample from a prior study (PAQANA011) as haplogroup D and not, as previously reported, haplogroup E. Consequently, we cast doubt on the authenticity of other haplogroup E sequences reported from ancient Pacific chicken specimens, where such procedures were not used. Perhaps more importantly, we suggest it will be very difficult to categorically rule out contamination as the source of haplogroup E sequences in ancient samples, due to the sporadic presence of

domesticate DNA in laboratory consumables (34) and the likelihood that any such contamination would result in haplogroup E sequences. Importantly, sequencing longer stretches of such contaminating templates (17) does not provide any additional support for authenticity.

Our recharacterization of the Rapa Nui PAQANA011 specimen as haplogroup D has implications for the other E sequences reported by Storey et al. (14), including the putative ancient Chilean chicken sequence from El Arenal-1 used to propose a prehistoric link between Polynesia and South America. Coalescent simulations using “all ancient haplogroups” and the modern data found that a European–South America route was more likely than a direct link between haplogroup E chicken sequences in Polynesia and South America, due to the phylogeographic signals within the worldwide dataset showing more similarities between chickens from Europe and South America. Perhaps more generally, these findings highlight how haplogroup E sequences are uninformative in nature and lack phylogeographic signal worldwide. A clear understanding of the nature and extent of Polynesian contact with South America will require genomic analyses of both ancient and modern populations of humans, commensals, and domesticates.

The distribution of the nine D haplotypes currently known to share the ancestral motif provides a unique genetic signature that can be used to trace the human dispersal of chickens through ISEA and the Pacific islands. Our reconstruction of the chicken colonization history of Micronesia highlights how simulations with CR data can provide sufficient phylogeographic signal to generate new hypotheses regarding trade and migration scenarios. Although it has been proposed that many commensals and domesticates are late arrivals to the Micronesian islands compared with humans (35), we have reconstructed a link between chickens from islands in the Bismarck Sea and Micronesia that dates to ~3,850 B.P. Such an early date is broadly consistent with archaeological evidence for human settlement of Saipan at 3,300–3,500 B.P. (36) and Palau at almost 4,000 B.P. (35), however few comparably early zoo-archaeological remains have been found in Micronesia to date (10, 13, 37). The inferred link between chickens from the Bismarcks and Micronesia without subsequent eastward movement does not support a two-wave model of Polynesian origins (14, 15, 38) where an earlier Lapita migration wave (2,800–3,500 ya) was mixed with a second, later wave moving through Micronesia to Western Polynesia (1,500–2,000 ya). Our simulations suggest that there was little interaction between chickens from Micronesia and the islands further eastward. One caveat concerning the power of the simulation analysis is the small number of Micronesian samples [one ancient Fais (16) and five modern Guam (26) specimens] and the expected historical and recent turnover of chicken populations in the region. Reassuringly, the ancient Fais haplotype H260 is present in modern chickens from the Santa Cruz ($n = 2$) and Solomon Islands ($n = 5$), apparently surviving any later introgression. Our reconstruction of the colonization history of Micronesian chickens demonstrates the potential power of coalescent simulations to test hypothesized migration and trade routes in archaeology and anthropology.

The only ISEA location where the ancestral SNP motif has been detected are Camiguin and Manila in the Philippines, and a link with this area is consistent with other lines of evidence about early Polynesian origins (3, 4, 31). The other Philippine chicken haplotypes are spread throughout the haplogroup D network (Fig. 3), reflecting relatively high genetic diversity (haplotype diversity = 0.89; *SI Appendix*, Table S9).

Despite extensive European settlement in the Pacific region over the last few centuries, many native chicken populations appear to contain relatively high frequencies of founding mitochondrial lineages—for example, the Marquesas, Solomon Islands, Vanuatu (26), and the Santa Cruz Islands—suggesting a high level of genetic continuity on these islands since prehistoric times. In addition to the two ancient haplotypes detected in modern samples, many other D haplotypes are also present in modern Pacific

chicken populations, from the Santa Cruz Islands, Solomon Islands, and Vanuatu (26). Therefore, Polynesian chickens may be one of the few examples where ancestral genetic patterns can still be observed in a domesticated species. Chickens on remote Pacific islands may also contain Polynesian nuclear genomic lineages, and if so, would represent one of the few surviving examples of precolonial domestic chickens.

Conclusion

Although mtDNA lacks the power of genomic loci to reconstruct complex evolutionary histories, we show that an informative region of the chicken mitochondrial genome can be used to trace their human dispersal in the Pacific. The analysis of ancient and modern specimens reveals a unique Polynesian genetic signature, which can be traced back to ISEA, and promises to allow further resolution of migration and trading routes in the area. Importantly, we reveal that a previously reported connection between pre-European South America and Polynesian chickens most likely resulted from contamination with modern DNA, and that this issue is likely to confound ancient DNA studies involving haplogroup E chicken sequences. These observations reaffirm the potential of coalescent simulations of genetic data to evaluate new hypotheses regarding the dispersal of humans, commensals, and domesticates derived from archaeology. These hypotheses can be further grounded using genomic-scale studies in combination with direct dating and genetic investigation of new archaeological samples.

Materials and Methods

Samples. Thirty-seven ancient chicken bones were collected for analysis, comprising eight from Niue, 11 from Hawai'i, and 18 from Rapa Nui excavated from deposits at Anakena by T.L.H. [including the six samples previously analyzed by Storey et al. (14); *SI Appendix*, Dataset S1]. Modern feather samples from ISEA and the Pacific ($n = 124$) were also examined to investigate current phylogeographic patterns (for location details, see Fig. 1 and *SI Appendix*, Figs. S3–S6, Table S1, and Dataset S6). The ancient samples were extracted, amplified (using primers in *SI Appendix*, Fig. S13), and sequenced at the Australian Centre for Ancient DNA (ACAD) in Adelaide, South Australia, according to a range of strict protocols (39), including numerous controls. Importantly, we included Shrimp DNase pretreatment in all PCR reactions, before adding template DNA, to remove any contaminating double-stranded DNA introduced via PCR reagents and plastic-ware (*SI Appendix*) (33). Independent external replication with direct sequencing of the PAQANA011 ancient sample was performed in a dedicated ancient DNA laboratory in the Archaeology Department at Durham University following strict laboratory procedures (39). The initial and independently replicated PCR fragments from bone sample PAQANA011 were also cloned and sequenced at the ACAD laboratories (*SI Appendix*, Dataset S4). Modern samples were extracted, with the highly variable 201 bp of the CR amplified and sequenced in a physically separate pre-PCR clean laboratory at the University of Adelaide and in the Archaeology Department at Durham University, following standard protocols (39).

WGM Analysis. To determine the robustness of the current standard chicken phylogenetic framework for the analysis of the short ancient sequences, all 61 WGM sequences (25) were downloaded and aligned; PartitionFinder (40) was used to identify the number of preferred partitions and their substitution model; and phylogenetic trees were produced using both Bayesian (MrBayes v3.2; 41) and maximum likelihood estimation (RaxML v7.0.4; 42). See *SI Appendix* for more details.

CR Sequence Analysis. In addition to the 144 CR sequences generated in this study, we downloaded 1,226 worldwide mtDNA CR chicken sequences from GenBank to establish the geographic distribution for each chicken haplogroup (14, 21–24, 26, 27, 43–46). To allow direct comparisons of the CR haplotypes, the 1,370 chicken sequences were aligned and trimmed to the highly variable 201 bp common to all of our 144 newly generated sequences (referred to as “201 bp CR dataset”). The 201 bp CR dataset was collapsed to unique haplotypes using Collapse v1.2, resulting in 274 unique haplotypes (H001–H274; *SI Appendix*, Dataset S6; referred to as “unique CR haplotype dataset”). ModelGenerator (47) was used to establish the best model to fit the unique CR haplotype dataset (GTR+I+G). The haplogroup of each of our 144 newly generated sequences was established by comparison with

sequences of known haplogroup designation from Liu et al. (24) (*SI Appendix, Dataset S6*). As the majority of the new 144 CR sequences were identified as haplogroup D, a Median Joining Network (using Network v4.6; 48) was generated for just the D haplogroup (*SI Appendix*). All new sequences were uploaded to GenBank (KJ000585–KJ000642; *SI Appendix, Dataset S6*).

Statistical Analysis. To examine the discrepancies between the composition and phylogeographic distribution of haplogroups reported by Storey et al. (14, 16) and those generated in this study, we tested the likelihood of detecting the reported proportions under different scenarios. A linear regression plot was also generated to visualize the correlation between occurrence of the four characteristic CR SNPs of the Polynesian chicken and longitude using the standard plotting function in R.

Bayesian Coalescent Simulations. Given the importance of pre- and post-Columbian mtDNA sequences from Chile and Peru, respectively (14, 16), we

tested whether coalescent simulations and approximate Bayesian computation of the 201 bp CR dataset could reconstruct a prehistoric link between the Pacific and South America (*SI Appendix*). To explore likely demographic histories for chickens in Micronesia and Polynesia, we also used BayeSSC to simulate alternate hypotheses of migration routes for comparison with the observed phylogeographic patterns within the Pacific.

ACKNOWLEDGMENTS. We thank Jessica Metcalf, Peggy Macqueen, and other members of the Australian Centre for Ancient DNA for assistance; John Terrell for manuscript discussions; Richard Walter (Department of Anthropology, University of Otago) and Atholl Anderson (Australian National University) for providing access to the Niue samples; and Will Millard for collecting modern feather samples from New Guinea. G.L. and K.D. also thank Atholl Anderson, Hanneke Boon, James Wharram, Klaus Hymphendahl, Matt Fletcher, Ingo Isensee, and the Lapita Expedition for collecting feather samples from ISEA and Western Polynesia. This work was funded by the Australian Research Council and the University of Adelaide.

- Denham T, et al. (2012) Dating the appearance of Lapita pottery in the Bismarck Archipelago and its dispersal to Remote Oceania. *Archaeology in Oceania* 47(1): 39–46.
- Green RC (1991) The Lapita Cultural Complex: Current evidence and proposed models. *Indo-Pacific Prehistory Association Bulletin* 11(1991):295–305.
- Kirch P (1997) *The Lapita Peoples: Ancestors of the Oceanic World* (Blackwell, Oxford).
- Spriggs M (1997) *The Island Melanesians* (Blackwell, Oxford).
- Summerhayes G (2000) *Lapita Interaction* (Australian National Univ Press, Canberra, Australia).
- Wilmshurst JM, Hunt TL, Lipo CP, Anderson AJ (2011) High-precision radiocarbon dating shows recent and rapid initial human colonization of East Polynesia. *Proc Natl Acad Sci USA* 108(5):1815–1820.
- Clarke AC, Burtenshaw MK, McLenachan PA, Erickson DL, Penny D; SMBE Tri-National Young Investigators (2006) Proceedings of the SMBE Tri-National Young Investigators' Workshop 2005. Reconstructing the origins and dispersal of the Polynesian bottle gourd (*Lagenaria siceraria*). *Mol Biol Evol* 23(5):893–900.
- Whitaker T, Carter G (1954) Oceanic drift of gourds—Experimental observations. *Am J Bot* 41(9):697–700.
- Roullier C, Benoit L, McKey DB, Lebot V (2013) Historical collections reveal patterns of diffusion of sweet potato in Oceania obscured by modern plant movements and recombination. *Proc Natl Acad Sci USA* 110(6):2205–2210.
- Larson G, et al. (2007) Phylogeny and ancient DNA of *Sus* provides insights into neolithic expansion in Island Southeast Asia and Oceania. *Proc Natl Acad Sci USA* 104(12):4834–4839.
- Larson G, et al. (2010) Patterns of East Asian pig domestication, migration, and turnover revealed by modern and ancient DNA. *Proc Natl Acad Sci USA* 107(17): 7686–7691.
- Savolainen P, Leitner T, Wilton AN, Matisoo-Smith E, Lundeberg J (2004) A detailed picture of the origin of the Australian dingo, obtained from the study of mitochondrial DNA. *Proc Natl Acad Sci USA* 101(33):12387–12390.
- Matisoo-Smith E, Robins JH (2004) Origins and dispersals of Pacific peoples: Evidence from mtDNA phylogenies of the Pacific rat. *Proc Natl Acad Sci USA* 101(24): 9167–9172.
- Storey AA, et al. (2007) Radiocarbon and DNA evidence for a pre-Columbian introduction of Polynesian chickens to Chile. *Proc Natl Acad Sci USA* 104(25): 10335–10339.
- Storey AA, et al. (2010) Mitochondrial DNA from 3000-year old chickens at the Teouma site, Vanuatu. *J Archaeol Sci* 37(10):2459–2468.
- Storey AA, et al. (2012) Investigating the global dispersal of chickens in prehistory using ancient mitochondrial DNA signatures. *PLoS ONE* 7(7):e39171.
- Storey AA, et al. (2013) Polynesian chickens in the New World: A detailed application of a commensal approach. *Archaeology in Oceania* 48(2):101–119.
- Oskarsson MCR, et al. (2012) Mitochondrial DNA data indicate an introduction through Mainland Southeast Asia for Australian dingoes and Polynesian domestic dogs. *Proc Biol Sci* 279(1730):967–974.
- Muir WM, et al. (2008) Review of the initial validation and characterization of a 3K chicken SNP array. *Worlds Poultry Sci J* 64(2):219–225.
- Fumihito A, et al. (1996) Monophyletic origin and unique dispersal patterns of domestic fowls. *Proc Natl Acad Sci USA* 93(13):6792–6795.
- Kanginakudru S, Metta M, Jakati RD, Nagaraju J (2008) Genetic evidence from Indian red jungle fowl corroborates multiple domestication of modern day chicken. *BMC Evol Biol* 8:174.
- Oka T, et al. (2007) Analysis of mtDNA sequences shows Japanese native chickens have multiple origins. *Anim Genet* 38(3):287–293.
- Silva P, et al. (2009) Mitochondrial DNA-based analysis of genetic variation and relatedness among Sri Lankan indigenous chickens and the Ceylon junglefowl (*Gallus lafayetti*). *Anim Genet* 40(1):1–9.
- Liu YP, et al. (2006) Multiple maternal origins of chickens: Out of the Asian jungles. *Mol Phylogenet Evol* 38(1):12–19.
- Miao YW, et al. (2013) Chicken domestication: An updated perspective based on mitochondrial genomes. *Heredity (Edinb)* 110(3):277–282.
- Dancause KN, Vilar MG, Steffy R, Lum JK (2011) Characterizing genetic diversity of contemporary Pacific chickens using mitochondrial DNA analyses. *PLoS ONE* 6(2):e16843.
- Gongora J, et al. (2008) Indo-European and Asian origins for Chilean and Pacific chickens revealed by mtDNA. *Proc Natl Acad Sci USA* 105(30):10308–10313.
- Gongora J, et al. (2008) Reply to Storey et al.: More DNA and dating studies needed for ancient El Arenal-1 chickens. *Proc Natl Acad Sci USA* 105(48):E100.
- Storey AA, et al. (2008) Pre-Columbian chickens, dates, isotopes, and mtDNA. *Proc Natl Acad Sci USA* 105(48):E99, author reply E100.
- Gonçalves VF, et al. (2013) Identification of Polynesian mtDNA haplogroups in remains of Botocudo Amerindians from Brazil. *Proc Natl Acad Sci USA* 110(16): 6465–6469.
- Bellwood P (2007) *Prehistory of the Indo-Malaysian Archipelago* (Australian National Univ Press, Canberra, Australia), 3rd Ed, p 385.
- Barker FK, Benesh MK, Vandergon AJ, Lanyon SM (2012) Contrasting evolutionary dynamics and information content of the avian mitochondrial control region and ND2 gene. *PLoS ONE* 7(10):e46403.
- Champlot S, et al. (2010) An efficient multistrategy DNA decontamination procedure of PCR reagents for hypersensitive PCR applications. *PLoS ONE* 5(9):e13042.
- Leonard J, et al. (2007) Animal DNA in PCR reagents plagues ancient DNA research. *J Archaeol Sci* 34(9):1361–1366.
- Wickler S (2004) Modelling colonisation and migration in Micronesia from a zooarchaeological perspective. *Colonisation, Migration, and Marginal Areas: A Zooarchaeological Approach*, eds Mondini M, Munoz S, Wickler S (Oxbow Books, Oxford), pp 28–40.
- Carson M (2008) Refining earliest settlement in Remote Oceania: Renewed archaeological investigation at Unai Bapot, Saipan. *Journal of Island & Coastal Archaeology* 3(1):115–139.
- Anderson A (2009) The rat and the octopus: Initial human colonization and the prehistoric introduction of domestic animals to Remote Oceania. *Biol Invasions* 11(7): 1503–1519.
- Addison DJ, Matisoo-Smith E (2010) Rethinking Polynesians origins: A West-Polynesia Triple-I model. *Archaeology in Oceania* 45(1):1–12.
- Cooper A, Poinar HN (2000) Ancient DNA: Do it right or not at all. *Science* 289(5482):1139.
- Lanfear R, Calcott B, Ho SY, Guindon S (2012) Partitionfinder: Combined selection of partitioning schemes and substitution models for phylogenetic analyses. *Mol Biol Evol* 29(6):1695–1701.
- Ronquist F, et al. (2012) MrBayes 3.2: Efficient Bayesian phylogenetic inference and model choice across a large model space. *Syst Biol* 61(3):539–542.
- Stamatakis A (2006) RAxML-VI-HPC: Maximum likelihood-based phylogenetic analyses with thousands of taxa and mixed models. *Bioinformatics* 22(21):2688–2690.
- Adebambo A, et al. (2010) Lack of phylogeographic structure in Nigerian village chickens revealed by mitochondrial DNA D-loop sequence analysis. *Int J Poultry Sci* 9(5): 503–507.
- Berthouly-Salazar C, et al. (2010) Vietnamese chickens: A gate towards Asian genetic diversity. *BMC Genet* 11:53.
- Muchadeyi FC, et al. (2008) Mitochondrial DNA D-loop sequences suggest a Southeast Asian and Indian origin of Zimbabwean village chickens. *Anim Genet* 39(6):615–622.
- Mwacharo JM, et al. (2011) Mitochondrial DNA reveals multiple introductions of domestic chicken in East Africa. *Mol Phylogenet Evol* 58(2):374–382.
- Keane TM, Creevey CJ, Pentony MM, Naughton TJ, McInerney JO (2006) Assessment of methods for amino acid matrix selection and their use on empirical data shows that ad hoc assumptions for choice of matrix are not justified. *BMC Evol Biol* 6(29):29.
- Bandelt HJ, Forster P, Röhl A (1999) Median-joining networks for inferring intra-specific phylogenies. *Mol Biol Evol* 16(1):37–48.
- Specht J (2007) Small islands in the big picture: The formative period of Lapita in the Bismarck Archipelago. *Oceanic Explorations: Lapita and Western Pacific Settlement, Terra Australis*, eds Bedford S, Sand C, Connaughton SP (Australian National Univ Press, Canberra, Australia), Vol 26, pp 51–70.

Supplementary Materials and Methods

Sample collection.

Thirty-seven ancient chicken bones were collected for analysis, comprising: eight ancient chicken bones from archaeological sites at Paluki and Anatoloa in Niue; 11 ancient Hawaiian chicken bones from an excavation at Makauwahi Cave on Kauai, Hawaii collected by DB; and 18 Rapa Nui chicken bones excavated from deposits at Anakena collected by TH. The 18 Rapa Nui bones include the six samples previously analyzed by Storey *et al.* (1) (Table S1). One hundred and twenty four modern feather samples were also examined to investigate recent phylogeographic patterns. These included 107 modern feathers from ISEA and Remote Oceania collected by GL and KD in 2008 and 2009: 28 from the Santa Cruz Islands, 31 from the Solomon Islands, 13 from Papua New Guinea, 10 from Indonesia, 23 from the Philippines and two from Vietnam. An additional 17 naturally shed modern feather samples were collected from the Marquesas (French Polynesia, n=6) by TH, and Kokee, Kauai (Hawaii, n=11) by TH/DB. Details on the locations of these modern samples can be found in Table S1 and are shown in Fig. 1.

Ancient DNA Extraction, Amplification, and Sequencing.

The samples were extracted, amplified, and sequenced in specialist ancient DNA (aDNA) laboratories at the Australian Centre for Ancient DNA (ACAD) in Adelaide, South Australia, according to a range of strict protocols and including controls (2). Ancient bone samples (n=37) were extracted and PCR experiments set up in the physically remote ACAD ancient laboratory, whereas the feathers (n=17) were extracted and PCR experiments set up in the physically remote ACAD pre-PCR clean-room laboratory. Independent external replication of the ACAD9068 (PAQANA011) ancient sample was performed in a dedicated aDNA lab in the Archaeology Department at Durham University following strict laboratory procedures (2).

ACAD ancient bone extractions.

Each chicken bone was ground to fine powder in a Mikrodismembrator (5000 rpm, for 10 seconds). Approximately 70 mg of bone powder was decalcified concurrently with protein digestion by incubation at 55 °C overnight in 1 mL of extraction buffer (consisting of 0.4725 M EDTA (pH=8.0), 0.2 % sodium dodecyl sulphate (SDS), and 0.7 mg.ml⁻¹ Proteinase K). After digestion, samples were centrifuged at 10,000 rpm for 5 mins and the supernatant was transferred to an Amicon ultra-4 (Millipore), which was centrifuged at 4000 xg until only 100 µL supernatant remained. The supernatant was washed with 1 mL molecular grade water and centrifuged again (at 4000 xg until only 100 µL remained). An equal volume of ATL buffer (Qiagen DNeasy kit) was then added, mixed, and the supernatant removed to a 2 mL screw-cap tube. The supernatant was incubated for 10–60 mins at room temperature on a rotary mixer after the addition of an equal volume of AL buffer (Qiagen DNeasy kit) and 0.02 µg.µl⁻¹ of carrier RNA. After the incubation, an equal volume of ethanol (100 %) was added, and then the total volume was transferred to a Qiagen DNeasy spin column where it was incubated at room temperature for 10–60 mins. The extraction then followed the Qiagen DNeasy kit instructions, with the following exceptions at the elution stage: 100–150 µL of warmed AE buffer was added and then incubated at room temperature for 10–30 mins, before being centrifuged at 8,000 rpm for 1 min, this step was repeated to finish with 200–300 µL of total volume.

ACAD PCR amplification and sequencing of ancient samples.

A 330 base pair (bp) segment of the mtDNA CR was amplified and sequenced from each specimen in short overlapping fragments (Table S10, Fig. S13), which is necessary to ensure amplification of the short damaged fragments of ancient DNA samples. PCRs were set up using 25 µL volumes containing a final concentration of 1 U Platinum Taq DNA Polymerase High Fidelity (Invitrogen), 1 x PCR Buffer (Platinum, Invitrogen), 3 mM MgSO₄, 200 µM each dNTP, 2 mg.ml⁻¹ rabbit serum albumin (Sigma), 1 µM forward and reverse primers and 2–3 µl of template DNA. PCR reactions were performed on a Corbett Research Palm Cycler using the following cycling conditions: 94 °C for 2 min, 55 cycles of 94 °C for 30 s, 55 °C for 30 s, 68 °C for 30 s, and a final extension of 10 min at 68 °C. Amplifications of extraction and PCR controls were performed in all experiments to monitor contamination. PCR products were separated by electrophoresis on a 3.5 % agarose gel. Successful PCR products (10 µl) were purified using 0.8 µl of EXOSAP (Fermentas) at final concentration of 0.38 U/µl Exonuclease I, and 0.05 U/µl Shrimp Alkaline Phosphatase, and thermal cycled at 37 °C for 30 mins, 80 °C for 15 mins, and 15 °C for 3 mins on a Corbett Research Palm Cycler. The forward and reverse complements of each fragment were sequenced from the same PCR reaction using the same primers as for the PCR, and Big Dye Terminator v3.1 cycle-sequencing chemistry, followed by vacuum clean up on a Multiscreen[®]₃₈₄ SEQ plate (Millipore). The sequencing run was conducted on an ABI 3130XC capillary sequencer.

Primers GG144F/GG387R and GG316F/GG586R (1) were used initially to amplify a portion of the mitochondrial (mtDNA) control region but as the PCR products amplified from these primers (fragment 1

and 2) are 250bp and 305bp respectively; additional primers were designed to cover the same range of mtDNA control region. Primer GG144F was paired with A1781 (187bp as fragment 3) and A1780 was paired with GG387R (151bp as fragment 4) to cover the equivalent DNA sequence as fragment 1 but in two overlapping fragments (Table S10). Primers A1958 and A1959 (192bp as fragment 5) were used to cover the balance of the mtDNA CR under study for the ancient samples. The use of this alternative primer set meant that a sequence gap was introduced in some ancient sequences equivalent to the primer binding region (Fig. S13). Further trimming to the sequence length shared across all chicken specimens resulted in a final sequence length of 201bp.

Durham Bone extractions as replication for PAQANA011.

DNA extraction of the replicate ancient chicken bone fragment PAQANA011 was performed in a dedicated aDNA lab in the Archaeology department at Durham University following strict laboratory procedures as per commonly used guidelines (2). All equipment and work surfaces were cleaned before and after each use with a dilute solution of bleach (10 %) followed by ethanol (99 %). The ancient chicken bone (~0.05 g) was pulverized in a Micro-dismembrator, digested in 0.425 M EDTA, 0.05 % SDS, 0.05 M Tris-HCl and 0.333 mg.ml⁻¹ proteinase K and incubated overnight on a rotary mixer at 50 °C until fully dissolved. 2 ml of solution was then concentrated in a Millipore Amicon Ultra-4 30 KDa MWCO to a final volume of 100 µl. The concentrated extract was purified using the QIAquick PCR Purification Kit following manufacturers recommendations, except that the final elution step was performed twice to produce a final volume of 100 µl. A negative extraction control was performed alongside the ancient bone sample.

Durham PCR amplification and sequencing of ancient samples.

PCRs were setup in 25 µl reactions using 1.25 U Taq GOLD (Applied Biosystems), 1 x Gold buffer (Applied Biosystems), 2.5 mM MgCl₂, 0.5 µg.µl⁻¹ bovine serum albumin (BSA), 200 µM of each dNTP, 0.8 µM of each forward and reverse primers, and 2-5 µl of aDNA extract. We used PCR primers (5'-3') GG144F and GG387R; GG316F, and GG586R (1). One PCR negative control was included for every three aDNA template PCR tubes. We ran a total of 22 PCRs with aDNA template, eight PCR negative controls and two PCR negative extraction control. Neither the PCR negative controls nor the negative extraction control produced bands (PCR product) when analyzed by gel-electrophoresis. PCR cycling conditions were 95°C for 5 min, 50 cycles of 94 °C for 45 sec, 54 °C for 45 sec and 72 °C for 45 sec, followed by 72 °C for 10 min. PCR products were stored at -20 °C. Sanger sequencing on the Applied Biosystems 3730 DNA Analyser was performed at the DNA sequencing service in the School of Biological and Biomedical Sciences at Durham University.

Modern DNA Extraction, Amplification, and Sequencing.

ACAD modern feather extractions.

Approximately 5 mm of each feather tip was rehydrated overnight with 1 ml phosphate buffered saline (PBS) on a rotary mixer at room temperature. On day 2, the supernatant was removed, the feather tip was macerated using a clean scalpel blade, and the sample was digested in 440 µl of digestion buffer (comprising ATL buffer (Qiagen DNeasy kit) with 1.8 mg.ml⁻¹ Proteinase K, and 90 mM Dithiothreitol) overnight at 55 °C on a rotary mixer. After digestion, 400 µL of AL buffer (Qiagen DNeasy kit) and 0.02 µg.µl⁻¹ of carrier RNA was added and incubated at room temperature on a rotary mixer for 10–30 mins, after which 400 µL of 100 % ethanol was added. The supernatant (650 µl) was incubated on a Qiagen DNeasy spin column for 10–30 mins before being centrifuged at 8000rpm for 1 min. This incubation was then repeated until all of the supernatant had been centrifuged through the column. The feather extraction protocol then followed that of the bone extraction procedure above.

ACAD PCR amplification and sequencing of modern feather samples.

PCR amplifications and sequencing of the 2 overlapping fragments were performed as per the ancient bone samples (see above).

Durham modern feather extraction

At Durham University, modern feathers from ISEA and Near Oceania were extracted in a pre-PCR clean room after Cooper & Poinar (2), using a protocol designed by Pfeiffer *et al.* (3) alongside the QIAquick PCR purification Kit (QIAGEN Ltd, UK). The tip of each feather was sampled (approximately 1cm cut into smaller fragments) and digested in 340µl extraction buffer containing 100mM Tris-HCl, pH8, 100mM NaCl, 3mM CaCl₂, 2% SDS (w/v), 40mM DTT and 250µg/ml proteinase K following the protocol by Pfeiffer *et al.* (3). The samples were incubated overnight at 56°C on a rotary mixer. Following digestion, the samples were purified using the QIAquick PCR purification Kit (QIAGEN Ltd, UK) following the manufacturers' instructions. An extraction control was used for every run of seven samples. The quantity of DNA present within each extract was measured using the Quant-iT HS Assay Kit (Invitrogen) used with the

Qubit fluorometer following the manufacturers' instructions.

Durham PCR amplification and sequencing of modern feather samples.

The amplification of a 201bp fragment of the CR (a subset of the 330bp amplified from the ancient samples) was undertaken through PCR in a physically separated clean laboratory. The forward primer GG144F and the reverse primer GG387R (see Table S10) were used to amplify this 201bp fragment (excluding primers). The PCR amplifications were performed in a 25µl reaction mix containing 1µl of extract, 0.96x PCR Gold Buffer, 2.4mM MgCl₂, 1.2U *Taq*, 0.24mM dNTP and 0.96µM of each primer. The PCR thermal cycling reactions consisted of 90s initial denaturation step at 94°C, followed by 35 cycles of 30s denaturation at 94°C, 30s annealing at 54°C, 30s extension at 72°C then a 10 minute final extension step at 72°C. The PCR products were visualized on a 0.5x agarose gel. Sequencing was performed on an ABI 3730 sequencer in the DNA-dedicated laboratory of the School of Biological and Biomedical Sciences.

Cloning of PAQANA011 at ACAD.

The PCR products generated from bone sample PAQANA011 were cloned using Stratagene and/or Topo cloning kits using manufacturers instructions (after an A-tailing reaction). The A-tailing reaction consisted of a 20 µl volume reaction containing 0.125 U HotMaster *Taq*, 2.5 µM dATP, 10x HotMaster buffer, 17 µl cleaned PCR products. The Buffer, dATP's and *Taq* were activated at 94 °C for 2 mins prior to addition of the PCR products then a further incubation at 72 °C for 10 mins. The A-tailed PCR products were then cleaned up using an Isopropanol precipitation and resuspended in 10 µl of PCR grade water. Sanger sequencing of the cloned PCR products were performed according to the procedures outlined above.

Phylogenetic inference

WMG: To determine the robustness of the current phylogenetic framework used for chicken research, the 61 WMG sequences from that study were downloaded and aligned using the Muscle algorithm in Geneious v5.6 (4). PartitionFinder v1.0.1 (5) was used to identify the number of preferred partitions and their substitution model (CR with HKY plus Gamma; codon 1, codon 2 and tRNA with HKY; and codon 3 with GTR). MrBayes v3.2 was used to generate a phylogenetic tree using four runs of four independent chains of 100 million iterations, less 25% as burnin (6). Tests for convergence to stationarity were performed by analyzing the standard deviation of split frequencies (< 0.01). RaxML v7.0.4 was used to generate a maximum likelihood tree with the same partitions as above, with bootstrapping performed via 100 iterations followed by an optimized maximum likelihood search (7).

To establish the level of phylogenetic concordance between topologies produced by WMGs versus the highly variable 201bp of the CR, the WMG data was split into two subsets, the 201bp fragment of the CR and the WMG excluding all of the CR. Each subset was rerun for the PartitionFinder and MrBayes analyses separately (*i.e.* the CR was run separately from the WMG data minus the CR), using the same parameters as above except only 2 million iterations were required to obtain a standard deviation of less than 0.01 for the four chains.

mtDNA CR: In addition to the 144 CR sequences generated in this study, we downloaded 1226 worldwide mtDNA CR chicken sequences from Genbank (1, 8-17) to establish the geographic distribution for each chicken haplogroup (n=1370). Although additional CR sequences have since been uploaded to Genbank (total chicken CR sequences are currently >3000), overall haplogroup designations are not changed with the inclusion of additional sequences (18). To allow direct comparisons of the CR haplotypes, the 1370 chicken sequences were aligned and trimmed to the 201bp common to our 144 newly generated sequences (referred to as 'full CR dataset'), with any indels removed. The 201bp hypervariable fragment is a useful region for reconstructing recent evolutionary events when DNA template length is a constraint (19, 20), such as in ancient DNA studies. For ease and clarity, the 1370 CR sequences were collapsed to unique haplotypes using Collapse v1.2 with manual adjustments where missing data caused short sequences to be considered different haplotypes, resulting in 274 unique haplotypes (H001-H274, see [Dataset S6](#); referred to as 'unique CR haplotype dataset'). The haplogroup of each of our 144 newly generated sequences was established by comparison to sequences of known haplogroup designation from Liu *et al.* (13) (see [Dataset S6](#)). The phylogenetic robustness of the full 330bp length (both fragment 1 & 2) was investigated using PhyML (21) to establish that inclusion of additional length sequences did not change the haplogroup designation of the new sequences (Fig. S14), with ModelGenerator (22) used to establish the model of best fit. We also explored the unique CR haplotype dataset in SplitsTree4 (23), using the NeighborNet algorithm, and found that the data appeared not to be tree-like, probably due to saturation and substitution rate heterogeneity (18). As the majority of the new 144 CR sequences were identified as haplogroup D, a Median Joining Network (using Network v4.6; 24) was also generated for just the D haplogroup. DNAsp was used to generate the

input file for the Network program. As DNAsp does not allow ambiguous bases and as these ambiguous bases were assumed to reflect sequencing errors, each ambiguous base was modified to reflect the more common of the possible bases within the haplogroup. Default weights were used in Network. To examine the discrepancies between the composition and phylogeographic distribution of haplogroups reported by Storey *et al.* (1, 25, 26) and those generated in this study, we tested the likelihood of detecting the reported proportions. Tests of statistical significance were performed using the `binom.test` command and probability distribution graphs were created using the `dbinom` command (Fig. S9), in the R 'stats' package (27). A linear regression plot (Fig. S10) was also generated to visualize the correlation between occurrence of the characteristic 4 CR SNPs of the Polynesian chicken and longitude using the standard plotting function in R (27). Population genetic and differentiation statistics were estimated in Arlequin v3.5 (28) for each population.

Bayesian Serial Simcoal (BayeSSC) simulations

Bayesian coalescent simulations (using Bayesian Serial Simcoal – BayeSSC v1.0; 29) were used to model eight possible scenarios of chicken colonization of the New World via either 1) Polynesia or 2) Europe. Low level migration between populations was 1) permitted or 2) not permitted, and two separate datasets were examined: 1) only containing haplogroup D ancient samples (representing authenticated Polynesian chicken signals); and 2) containing all putative ancient haplotypes (ancient samples from haplogroups B, D, E; 1, 25, 26; this paper). In order to test between the different migration routes in BayeSSC, we modeled the same uniform priors for modern population deme size and population growth for each of the migration scenarios to maintain similar demographic parameters.

All eight of the South American migration simulations were performed using common uniform priors on modern effective population sizes (MSEA: 10,000-2,000,000; ISEA: 10,000-1,000,000; Europe: 10,000-1,000,000; South America: 1,000-1,000,000; and Pacific: 1,000-1,000,000), with the total panmixia model having a uniform prior with a slightly lower minimum and slightly higher maximum (10,000-10,000,000). The uniform prior on the growth rate since the last migration event (which differs for each model – see Figure S11) was also common across all eight migration scenarios (growth rate of -0.00001, which equates to 0.001% per generation). Although the generation time of free-ranging domestic chickens is not known, we have estimated a generation time of a year. We considered this appropriate as we were attempting to model early historic chicken populations, which would have had relatively short life spans and low fecundity due to their value as a food source of both meat and eggs. The samples included in the BayeSSC simulations and the migration matrices used are provided in Tables S2-3 and S4-5, respectively.

To explore likely demographic histories for chickens in western Polynesia, we also used BayeSSC to simulate alternate migration route hypotheses for comparison with the observed phylogeographic patterns within the Pacific. Sequences in the 201bp CR dataset from the Pacific and ISEA that had location details ($n=177$) were used to model five possible scenarios of migration routes through western Polynesia, Micronesia and eastern Polynesia (see Fig. S12): a total panmixia model; two models that describe the colonization of Micronesia but with no onward link to Polynesia (one from the Philippines-Micronesia [P-M; arrow 2A in Fig. 1] and the other from New Guinea-Micronesia [NG-M; arrow 3]); and two models that describe Micronesia as a stopping point in an onward route to Polynesia (one from the Philippines-Micronesia-West Polynesia [P-M-WP; arrows 2A and 2B] and the other from New Guinea-Micronesia-West Polynesia [NG-M-WP; arrows 3 and 2B]). Note that the alternate scenario of migration from Micronesia to New Guinea was not tested. The Pacific migration scenarios also had common uniform priors on modern effective population sizes (Philippines: 10,000-2,000,000; PNG: 10,000-2,000,000; Micronesia: 1,000-1,000,000; Melanesia: 1,000-1,000,000; Western Polynesia: 1,000-1,000,000; Eastern Polynesia: 1,000-1,000,000), and a common uniform prior on growth rate since the last migration event at 750 BP (growth rate of -0.00001, which equates to 0.001% per generation). The samples included in the Pacific BayeSSC simulations and the migration matrices used are provided in Tables S7 and S8, respectively.

Supplementary Information

Ancient Pacific sample (PAQANA011)

Repeated amplifications and Sanger sequencing of Storey *et al.*'s PAQANA011 sample (1) placed it within the D haplogroup ([Dataset S3](#)), however it also highlighted 10 type 2 transitions (C-to-T or G-to-A) across the 12 amplicons. This type of transition is commonly observed in aDNA because of post-mortem template damage, with the hydrolytic loss of amino-groups from cytosine converting the base to uracil, which DNA polymerases read as a thymine base (30). As these internal PCR replications confirmed the discrepancy between our extraction (ACAD9068) and Storey *et al.*'s (1) published sequence (EF535246) for

bone sample PAQANA011, we had it independently replicated by another aDNA laboratory at Durham University ([Dataset S3](#)).

A subsample of the PAQANA011 bone was sent to Durham University, where it was extracted and three PCR amplifications were performed for each of fragments 1 and 2 of the mtDNA CR (as only fragment 1 is diagnostic to haplogroup level and below, it is this fragment that is compared to the Liu *et al.* (13) dataset in the discussion). Two different haplotypes were detected across the three amplicons of fragment 1 for PAQANA011. Two amplicons matched each other and fell within clade D. The third amplicon matched Haplotype A35, which is found in chickens from China and Japan (13), as well as two other Genbank samples: AM746039 (14) and AB263973, both of which are commercial breeds. Liu *et al.* (13) found almost 95% of domestic chickens to belong to clades A, B, C, E, F, and G, which suggests the presence of clade A (this study) and clade E (1) amplicons from this sample may reflect lab consumable/reagent contamination by modern domestic chicken DNA. Although fragment 2 is not as phylogeographically informative as fragment 1, amplification of this fragment did reinforce the highly damaged/degraded nature of this particular sample, which may have allowed modern chicken DNA (at low levels in lab reagents/consumables) to occasionally outcompete the endogenous DNA. Across the three amplicons of fragment 2, seven randomly distributed C-to-T transitions were found to differentiate the sequences from our extract of this sample (ACAD9068; see [Dataset S3](#)). Although the damaged sites tended to be within the longer amplicons, this was not always the case.

Cloning of the PCR amplicons from both labs (ACAD and Durham University) was undertaken at ACAD to confirm the Sanger sequencing results and to establish whether the C=>T transitions were due to post-mortem damage. At the base pairs where C=>T transitions were initially detected, few differences were detected between the clones, which suggests that each amplicon was formed by amplification from a single damaged template ([Dataset S4](#)). However, at least four matching (non-damaged) amplicons were retrieved for both fragments 1 and 2, so that a consensus sequence could be generated ([Dataset S4](#)).

Shrimp DNase experiment to test ACAD3890 and ACAD9060 samples

From the 24 ancient samples successfully amplifying DNA, two samples (ACAD3890 from Niue, and ACAD9060 from Rapa Nui) yielded haplotypes other than from clade D. ACAD3890 matched Liu *et al.*'s haplotype 'A34', which is found in only one modern sample from Xinjiang, China (13). ACAD3890 had poor amplification/sequencing success (n=1/31), with only one amplicon (102bp) amplifying and sequencing successfully (using primers A1780 and GG387R). The second sample, ACAD9060, matched E01 found commonly worldwide (China, n=19; India, n=10; Sri Lanka, n=20; Japan, n=27; Iran, n=3; Turkmenistan, n=3; UK, n=2; Europe, n=34; Chile, n=25; Kenya, n=58) (11, 13, 15, 16). This sample also did not amplify often (n=8/14), with the E01 haplotype only occurring once (all other PCR amplicons could not be successfully sequenced). Accordingly, contamination by modern chicken DNA was suspected as the source of both the A34 and E01 haplotypes, however due to the stringent aDNA procedures in place at the ACAD, there is limited opportunity for modern chicken DNA to enter the lab. The possibility of contamination in the laboratory consumables/reagents was tested by the addition of Shrimp DNase to three sets of subsequent PCR reactions for all 24 samples. Shrimp DNase is an endonuclease that cleaves phosphodiester bonds in double stranded DNA. It is often used to treat PCR master mixes prior to the addition of extracted DNA in order to break down contaminating modern DNA in PCR reagents.

No DNA was successfully amplified after Shrimp DNase treatment of PCR's for the ACAD3890 sample, while Shrimp DNase treatment of PCR's for ACAD9060 sporadically gave haplotype D sequence across a variety of fragment sizes (210bp, 190bp, 129bp, and 90bp), plus one sequence (116bp) that could not be assigned to any haplogroup – it had 7 mismatches from its closest BLAST matches (94% identity). Both of these results suggest PCR reagent contamination by modern chicken DNA was the likely source of the original A34 and E01 haplotypes. When ACAD9060 did give a D haplotype, it matched the D haplotype from the other ancient Pacific samples for fragment 1, however fragment 2 could not be amplified so this sample was excluded from further analyses. The possibility of laboratory consumable/reagent contamination needs to be discussed more in aDNA studies, especially when the use of a simple PCR additive, such as Shrimp DNase, can rule out one source of possible contamination (i.e. PCR reagents; 31). This additive (or similar) is essential for aDNA studies of commensal or domesticated species, where DNA from modern populations of the same species may permeate factories where lab consumables and/or reagents are produced (32).

Although the overall percentage of E haplotypes (15/53, 28%) detected in ancient Polynesian chicken samples is higher than the nominal 5% contamination rate of modern domestic species found in lab consumables (32), low levels of preserved endogenous DNA may allow any contaminating modern chicken DNA to outcompete them in PCR reactions (unless an endonuclease such as Shrimp DNase is used to remove contaminating DNA in PCR lab reagents). Previously, some of the Storey *et al.* co-authors have

reported low amplification success from Mele Havea (Tonga) and Paluki (Niue) (33) — and in our analyses of Paluki material we identified a non-D haplotype to be contamination from PCR reagents ([Dataset S1](#)).

Haplogroup E vs. haplogroup D

More broadly, haplogroup D has been found to closely follow the distribution of cockfighting in India, Indonesia, China and Japan (13). Many Polynesian societies have traditionally supported cockfighting (called 'faatitoraamoā' in Tahitian; 34), for example Tahitians had many songs and religious traditions (including 'Ruaifaatoa', the god of cockfighting) connected to faatitoraamoā (35). In contrast many of the other haplogroups are ubiquitous worldwide, potentially as a result of early historic dispersal with European colonialists (e.g. haplogroups A, B, and E) and are therefore likely to be phylogeographically uninformative and the predominant contamination of laboratory consumables.

To investigate the conflicting results obtained here versus those previously reported by Storey *et al.* (1, 25, 26), we calculated the probability of detecting the reported proportions of D and E haplogroups given the different datasets. Tests of statistical significance were performed using the `binom.test` command and probability distribution graphs were created using the `dbinom` command in the R 'stats' package (Fig. S9; 1, 25, 26). It is possible that if haplogroup E was present in low frequencies amongst ancient Pacific chickens (e.g. 10%) we did not detect it within our 22 ancient samples simply due to stochastic sampling effects (P-value = 0.098). However, if E was actually present at only 10% of the ancient Pacific chickens then it is highly unlikely that Storey *et al.* would also have detected 15/31 ancient Pacific chickens as having haplogroup E sequences (P-value = 6.9×10^{-9}).

BayeSSC coalescent simulations for testing South American link

A European source of South American chickens was also the more likely scenario when only haplogroup D sequences were considered to represent authentic Polynesian chickens (*i.e.* simulations using all modern chicken data, but only haplogroup D ancient samples). This is perhaps not surprising as the only ancient haplogroup D sample from South America (from early historic Peru) does not share a haplotype with any ancient population in Eastern Polynesia. In fact, the most geographically proximate Pacific populations sharing the early historic Peruvian haplotype (H033) are Vanuatu, Santa Cruz and the Solomon Islands, and all ISEA populations contain this common haplotype. The movement of chickens between South America and the Philippines via the Manila galleon trade in the 1500s (20, 25) may provide a possible explanation for the presence of this common ISEA haplotype in early historic Peru.

BayeSSC coalescent simulations for testing migration routes to Micronesia

The Bayesian simulations suggest the most likely scenario of those tested involved movement of chickens between Micronesia and the Bismarck Sea at a relatively early date (although post-human arrival in Micronesia) but with little interaction with chickens further eastward. A link between the long-distance trade and communication network of Yap (in Micronesia) and the Bismarck region has previously been postulated by Kirch based on linguistics, with further archaeological evidence suggesting Fais was originally settled from Yap about 100 AD (36, 37). An early migration route linking the Bismarcks with islands in Micronesia, via the proposed trade hub of the 'Yapese Empire', is therefore not surprising. A newly-discovered Lapita migration route along the southern coast of PNG at 2500 BP, further highlights the extensive nature of early Polynesian networks (38).

Only one ancient specimen has likely influenced the Bismarck/Micronesian link (a Fais sample dated to 600 ± 40 BP with H260; 25). However, the coalescent has still been able to reconstruct the true history even though the same haplotype is present in modern chickens from the Solomon and Santa Cruz Islands (*i.e.* the coalescent hasn't been overwhelmed by a shared haplotype). Rather, it is the entire Micronesian chicken population (including ancient H260 and modern H032, H224, and H225 haplotypes) that has contributed to the coalescent reconstruction of the migration model. As the timing of this Bismarck-Micronesia link is based purely on coalescent simulations using an inferred mutation rate, the proposed Bismarck-Micronesia migration route is not necessarily temporally robust.

Issues with previous radiocarbon dates

The three pre-Columbian dates reported in Storey *et al.* (NZA 26115, NZA28271 and NZA28272; 1) were performed without ultrafiltration of high molecular weight collagen, or the removal of exogenous organic matter through XAD-2 purification. It is also notable that the oldest sample (NZA26115) was a very small sample characterized by a low collagen yield, and lacks analytical data. Previous work has shown that neither C:N ratios, nor $d^{13}C:d^{15}N$ ratios are indicators of reliable radiocarbon dates (39). Given the importance of this result it would be highly desirable that these (and other) specimens were re-dated using

the most advanced methodologies available. These would include $\delta^{13}\text{C}$ measurements of individual amino acids (40) to properly examine the potential for dietary marine carbon to produce an erroneously older (pre-Columbian) date.

Table S1. Pacific samples used in this study with corresponding haplogroups discussed in the text.

Locations		# of samples			No. of successful samples by haplogroup					References	
Island	Site name	# attempted	# successful	# contaminated	D	E	A	B	I		
ANCIENT	Rapa Nui	Anakena	18	13	1 [#]	13	1 [#]				This study
	Hawaii	Makauwahi	11	7	0	7					
	Niue	Anatoloa	2	2	0	2					
		Paluki	6	0	1 [#]			1 [#]			
MODERN	Hawaii	Kokee	11	10	0		10				This study
	Marquesas	-	6	5	0	3	2				
	Vanuatu	Efate		14		11	2	1			Dancause <i>et al.</i> (10)
		Tanna		3		3					
		Aneityum		19		19					
		Ambae		7		7					
	Guam	-		5		3	2				
	Santa Cruz	Anuta Island		7		7					This study
		Tikopia		7		5	2				
		Nendo Island		5		5					
		Vanikoro Island		5		5					
		Temotu Neo		2		2					
		Utupua Island		2		2					
	Solomon Islands	Nggela Island		9		7	2				
		Makira-Ulawa		6		6					
		Rendova Island		6		5			1		
		Russell Island		5		5					
	Treasury Island		5		5						
	Papua New Guinea	Karkar Island		6		5	1				
		Witu Island		4		4					
Watom Island			3		3						
Indonesia	Baik Island		4		4						
	Mulia		2		2						
	Enarotali		1			1					
	Nabire		1		1						
	Ternate Island		1		1						
	Wamena		1		1						
Philippines	Camiguin		8		3	4			1		
	Pintuyan Town		4		3	1					
	Jagna Province		3		2	1					
	Cebu City		2			2					
	Balicasag Island		1			1					
	Palawan		1		1						
	Pamalican Island		1		1						
	Panglao Island		1		1						
	Merlia Farm		1				1				
Unknown		1		1							
Vietnam	Ho Chi Minh		2					2			

* Haplotype designation from Liu *et al.* (13)

Results not replicable and identified as contamination after Shrimp DNase treatment.

Table S2. Data used in Bayesian Serial Simcoal (BayeSSC) analysis for investigating the origins of South American chickens. This dataset uses ancient samples from all haplogroups i.e. it includes samples from all haplogroups (this paper, plus those amplified without Shrimp DNase: 1, 25, 26, 41).

Age of sample (years BP)	Sequences included	Region	Temporal scale	Site	Reference
0	795 sequences	MSEA	Modern	China, Laos, Myanmar, Vietnam, Thailand, Malaysia	(9, 13, 42)
2700	THABNW003	MSEA	Ancient	Ban Non Wat site, Thailand	(25)
0	330 sequences	ISEA	Modern	Philippines, Japan, Indonesia, New Guinea	(13, 16)
0	58 sequences	Europe	Modern	Europe	(13)
980	ESPALB002	Europe	Ancient	Albarracin (Teruel) site, Spain	(25)
350	ESPLCT001	Europe	Ancient	La Cartuja (Seville) site, Spain	(25)
0	39 sequences	South America	Modern	Chile,	(11)
350	PRUTOR001	South America	Ancient	Torata Alta site, Peru	(25)
657	CHLARA001	South America	Ancient	El Arenal-1 site, Chile	(1)
536	CHLARA004	South America	Ancient	El Arenal-1 site, Chile	(41)
350	PRULOC001	South America	Ancient	Locumbilla Winery site, Peru	(25)
540	CHLARA003	South America	Ancient	El Arenal-1 site, Chile	(41)
0	122 sequences	Pacific	Modern	Guam, Solomon Islands, Santa Cruz, Vanuatu, Marquesas, Hawaii	this paper
660	ACAD9057, ACAD9067	Pacific	Ancient	Anakena site, Rapa Nui	this paper
680	ACAD9066, ACAD9068, ACAD9070, ACAD9072, ACAD9073, ACAD9074	Pacific	Ancient	Anakena site, Rapa Nui	this paper
700	PAQANA010, ACAD9071	Pacific	Ancient	Anakena site, Rapa Nui	(this paper; 1)
700	ACAD9069, ACAD9065	Pacific	Ancient	Anakena site, Rapa Nui	This paper
670	PAQANA006	Pacific	Ancient	Anakena site, Rapa Nui	(1)
600	ACAD9075, ACAD9076	Pacific	Ancient	Anakena site, Rapa Nui	this paper
534	ACAD8136, ACAD8668, ACAD8670, ACAD8671, ACAD8672, ACAD8674, ACAD8675	Pacific	Ancient	Makauwahi cave site, Hawaii	this paper
1285	ACAD3895, ACAD3896	Pacific	Ancient	Anatoloa site, Niue	this paper
2000	Tonga HB, Tonga TD	Pacific	Ancient	Mele Havea site; Tongoleleka site, Tonga	(1)
1000	ASMFTF001	Pacific	Ancient	Fatu-ma-Futi site, American Samoa	(1)
810	FSMFSP001	Pacific	Ancient	FSPO-4 site, Fais	(25)
2775	SLB33001	Pacific	Ancient	SE-SZ-33 site, Santa Cruz	(25)
228	PAQHAN001	Pacific	Ancient	Hangahahave site, Rapa Nui	(1)
1550	FSMFSP002, FSMFSP003	Pacific	Ancient	FSPO-8 site; FSPO-4 site, Fais	(25)
2605	VUTTEO003	Pacific	Ancient	Teouma site, Vanuatu	(26)
910	HWIKUA001	Pacific	Ancient	Kualoa, O'ahu, Hawaii	(1)
1590	NIUPKI009	Pacific	Ancient	Paluki site, Niue	(1)
2974	VUTTEO006	Pacific	Ancient	Teouma site, Vanuatu	(26)

Table S3. Data used in Bayesian Serial Simcoal (BayeSSC) analysis for investigating the origins of South American chickens. This dataset uses ancient samples from only haplogroup D (this paper; 1, 25).

Age of sample (years BP)	Sequences included	Region	Temporal scale	Site	Reference
0	795 sequences	MSEA	Modern	China, Laos, Myanmar, Vietnam, Thailand, Malaysia	(9, 13, 42)
0	330 sequences	ISEA	Modern	Philippines, Japan, Indonesia, New Guinea	(13, 16)
0	58 sequences	Europe	Modern	Europe	(13)
0	39 sequences	South America	Modern	Chile,	(11)
350	PRUTOR001	South America	Ancient	Torata Alta site, Peru	(25)
0	122 sequences	Pacific	Modern	Guam, Solomon Islands, Santa Cruz, Vanuatu, Marquesas, Hawaii	this paper
660	ACAD9057, ACAD9067	Pacific	Ancient	Anakena site, Rapa Nui	this paper
680	ACAD9066, ACAD9068, ACAD9070, ACAD9072, ACAD9073, ACAD9074	Pacific	Ancient	Anakena site, Rapa Nui	this paper
700	PAQANA010, ACAD9071	Pacific	Ancient	Anakena site, Rapa Nui	(this paper; 1)
700	ACAD9069, ACAD9065	Pacific	Ancient	Anakena site, Rapa Nui	This paper
670	PAQANA006	Pacific	Ancient	Anakena site, Rapa Nui	(1)
600	ACAD9075, ACAD9076	Pacific	Ancient	Anakena site, Rapa Nui	this paper
534	ACAD8136, ACAD8668, ACAD8670, ACAD8671, ACAD8672, ACAD8674, ACAD8675	Pacific	Ancient	Makauwahi cave site, Hawaii	this paper
1285	ACAD3895, ACAD3896	Pacific	Ancient	Anatoloa site, Niue	this paper
810	FSMFSP001	Pacific	Ancient	FSPO-4 site, Fais	(25)
228	PAQHAN001	Pacific	Ancient	Hangahahave site, Rapa Nui	(1)

Table S4. Migration matrix used in the BayeSSC investigation of the origins of South American chickens (ancient samples from all haplogroups). The matrix represents the ratio of the lineages in each row that will migrate to each column backwards through time (i.e. reconstructed via the coalescence).

	MSEA	ISEA	Europe	South America	Pacific
MSEA	0	0	0.00001	0	0
ISEA	0.00001	0	0.00001	0	0.00001
Europe	0.00001	0	0	0.0000001	0
South America	0	0	0.0001	0	0
Pacific	0	0.00001	0.0001	0.0000001	0

Table S5. Migration matrix used in the BayeSSC investigation of the origins of South American chickens for models via Europe (D haplogroup ancient samples only). The matrix represents the ratio of the lineages in each row that will migrate to each column backwards through time (i.e. reconstructed via the coalescence).

	MSEA	ISEA	Europe	SthAm	Pacific
MSEA	0	0	0.00001	0	0
ISEA	0.00001	0	0.00001	0	0.00001
Europe	0.00001	0	0	0.0000001	0
SthAm	0	0	0.0001	0	0
Pacific	0	0.00001	0.0001	0.0000001	0

Table S6. F_{ST} population differentiation statistics for all modern haplogroup D populations

n		Japan	Indonesia	Philippines	PNG	Guam	Santa Cruz	Solomon Island	Vanuatu	Marquesas	Vietnam	China	Thailand	Myanmar
33	Japan	0												
19	Indonesia	0.19**	0											
12	Philippines	0.15*	0.03	0										
12	PNG	0.35**	0.50**	0.26**	0									
3	Guam	0.09	0.10	-0.05	0.59**	0								
26	SantaCruz	0.28**	0.22**	0.13**	0.22**	0.14	0							
28	SolomonIs	0.29**	0.21**	0.13**	0.20**	0.15	-0.01	0						
40	Vanuatu	0.31**	0.34**	0.24**	0.34**	0.27**	0.08**	0.11**	0					
3	Marquesas	0.23**	0.51**	0.15*	1.00**	0.25	0.02	0.10	-0.08	0				
2	Vietnam	-0.08	-0.20	-0.24	0.94	-0.29	0.14	0.16	0.24	0.77	0			
23	China	0.13**	0.25**	0.16**	0.44**	0.10	0.36**	0.37**	0.38	0.30	-0.04	0		
2	Thailand	0.05	0.07	-0.09	0.94**	-0.13	0.31	0.34	0.44	0.86	0.00	0.09	0	
2	Myanmar	0.36**	0.77**	0.45**	1.00*	0.45	0.69**	0.71**	0.67	1.00	0.86	0.13	0.89	0

* p-value < 0.05; ** p-value < 0.01.

Table S7. Data used in Bayesian Serial Simcoal (BayeSSC) analysis for investigating the prehistoric colonization history of chickens in Micronesia. This dataset uses ancient samples from only haplogroup D (it includes samples from both this paper and Storey *et al.* (1, 25)).

Age of sample (years BP)	15 sample groups	Region	Temporal scale	Site	Reference
0	15 samples	Philippines	Modern	Philippines	(this paper; 9, 13, 42)
0	15 samples	NG	Modern	PNG	this paper
0	5 samples	Micronesia	Modern	Micronesia	(10)
0	32 samples	Solomons	Modern	Solomon Islands	this paper
0	71 samples	Western Polynesia	Modern	Santa Cruz & Vanuatu	this paper
0	14 samples	Eastern Polynesia	Modern	Hawaii & Marquesas	this paper
810	FSMFSP001	Micronesia	Ancient	FSPO-4 site, Fais	(25)
1285	2 samples	Central Polynesia	Ancient	Niue	this paper
660	ACAD9057, ACAD9067	Eastern Polynesia	Ancient	Anakena site, Rapa Nui	this paper
680	ACAD9066, ACAD9068, ACAD9070, ACAD9072, ACAD9073, ACAD9074	Eastern Polynesia	Ancient	Anakena site, Rapa Nui	this paper
700	PAQANA010, ACAD9071	Eastern Polynesia	Ancient	Anakena site, Rapa Nui	(this paper; 1)
700	ACAD9069, ACAD9065	Eastern Polynesia	Ancient	Anakena site, Rapa Nui	this paper
670	PAQANA006	Eastern Polynesia	Ancient	Anakena site, Rapa Nui	(1)
600	ACAD9075, ACAD9076	Eastern Polynesia	Ancient	Anakena site, Rapa Nui	this paper
534	ACAD8136, ACAD8668, ACAD8670, ACAD8671, ACAD8672, ACAD8674, ACAD8675	Eastern Polynesia	Ancient	Makauwahi cave site, Hawaii	this paper

Table S8. Migration matrix used in the BayeSSC investigating the prehistoric colonization history of chickens in Micronesia (D haplogroup ancient samples only). The matrix represents the ratio of the lineages in each row that will migrate to each column backwards through time (i.e. reconstructed via the coalescence).

	Philippines	New Guinea	Micronesia	Solomon Islands	Western Polynesia	Eastern Polynesia
Philippines	0	0	0.00001	0	0	0
New Guinea	0.00001	0	0.00001	0.00001	0	0
Micronesia	0.00001	0.00001	0	0.00001	0	0
Solomon Islands	0	0.0001	0.00001	0	0.00001	0
Western Polynesia	0	0.000001	0	0.00001	0	0.00001
Eastern Polynesia	0	0	0	0	0.00001	0

Table S9. Population genetic summary statistics for haplogroup D in the Asia-Pacific region.

	n	#Hap	Hdiv	nDiv (%)	Ts	Tv	Tajima's D	Fu's FS
Vietnam	2	2	1.00	0.50	1	1	0.00	0.00
Thailand	2	2	1.00	0.50	1	0	0.00	0.00
Guam	3	3	1.00	1.99	6	0	0.00	0.13
Philippines	12	6	0.89	1.65	12	0	-0.69	-1.09
Japan	33	8	0.81	2.08	11	1	1.33	1.50
Santa Cruz	26	6	0.81	0.83	6	0	0.19	-0.35
China	23	7	0.78	1.83	1	1	1.68	0.97
Vanuatu	40	8	0.76	0.81	9	1	-0.92	-1.51
Indonesia	19	6	0.74	0.53	4	0	-0.21	-2.16
Solomon Islands	28	4	0.71	0.76	4	0	1.25	1.45
Myanmar	2	1	0.00	0.00	0	0	0	-
Marquesas	3	1	0.00	0.00	0	0	0	-
PNG	12	1	0.00	0.00	0	0	0	-

n – number of samples; #Hap – number of haplotypes; Hdiv – haplotype diversity; nDiv – nucleotide diversity; Ts – transitions; Tv – transversions.

Table S10. Primer sequences

Primer name	Primer sequence (5' to 3')	Reference
GG144F	ACCCATTATATGTATACGGGCATTAA	(1)
GG387R	CGAGCATAACCAAATGGGTTAGA	(1)
GG316F	AACAAGTCACCTAACTATGAATGGTTAC	(1)
GG586R	AGTTATGCATGGGATGTGCCTGACCGA	(1)
A1780F	CAGCTCCAACCCTACCAAG	This paper
A1781R	AGGTGACTTGTTGGGGGAAG	This paper
A1958F	TCTAACTCATTTGGTTATGCTCG	This paper
A1959R	AGTTATGTATGGGATGTGCCTGACCGA	This paper

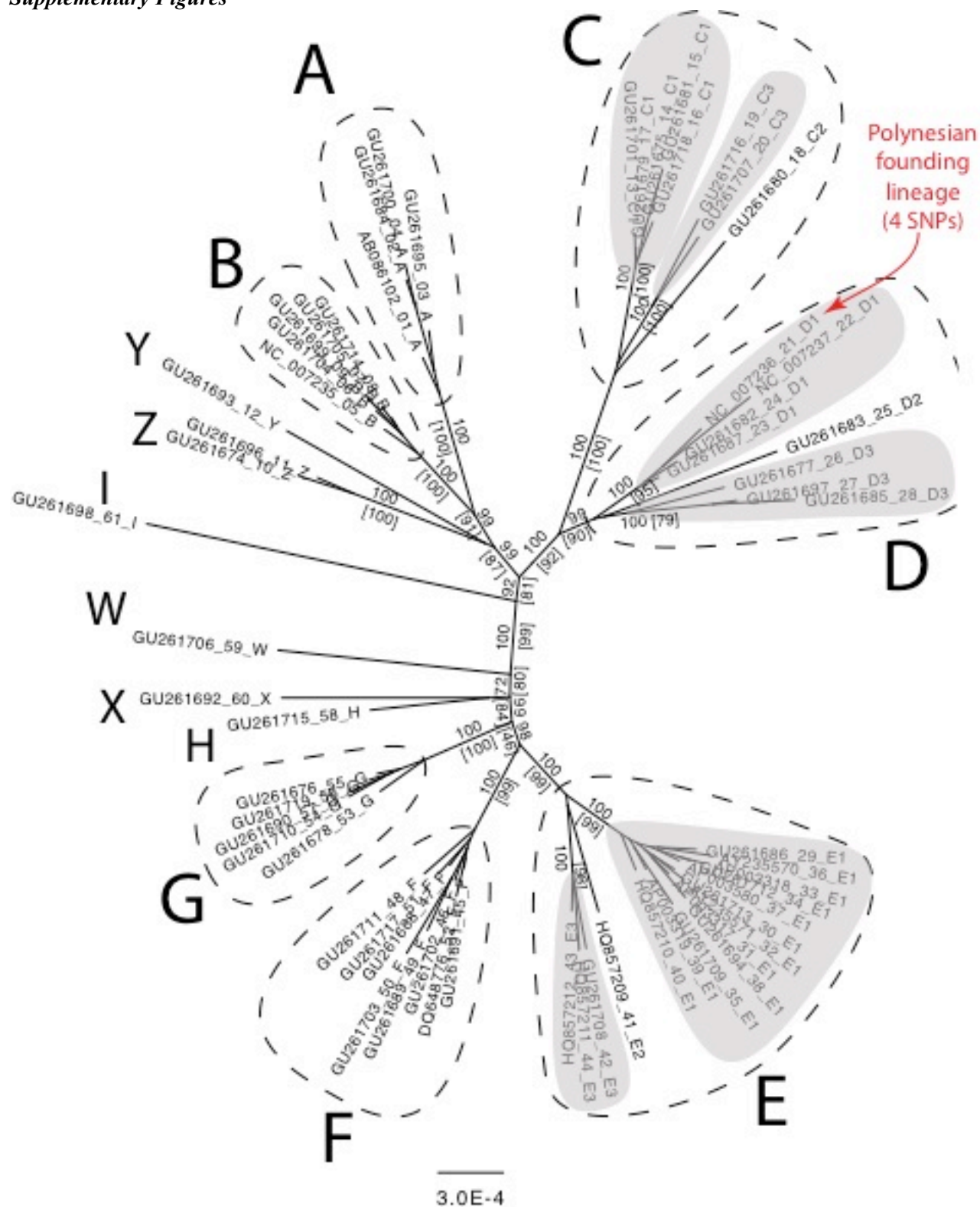


Fig. S1. Bayesian phylogenetic tree based on the whole mitochondrial genome dataset of 61 Miao *et al.* (43) excluding the control region. Numbers above branches are Bayesian posterior probabilities, with Maximum Likelihood bootstrap values shown below branches in square brackets.

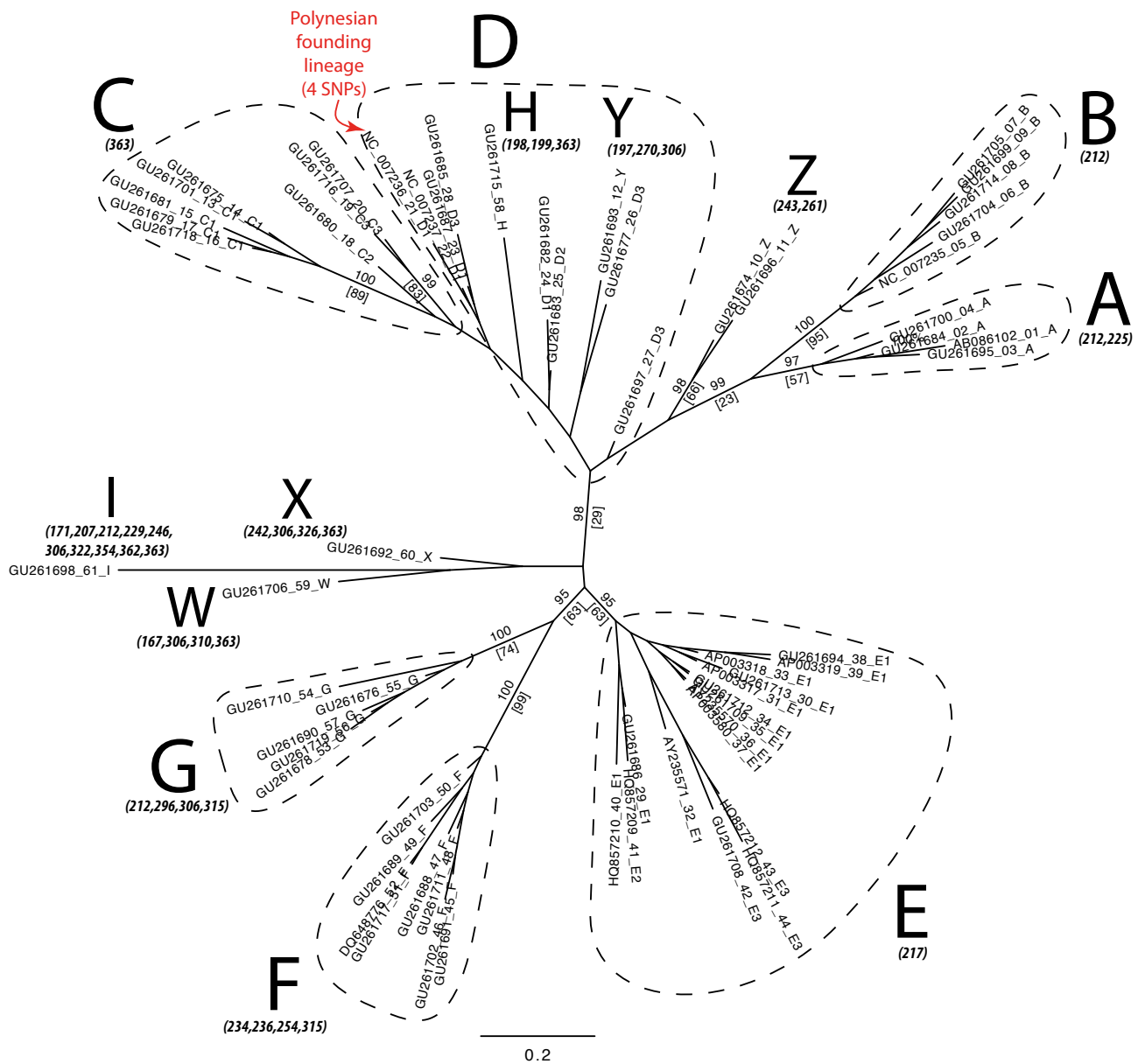


Fig. S2. Bayesian phylogenetic tree based on 201bp fragment of the control region from 61 WMG sequences of Miao *et al.* (43). Numbers above branches are Bayesian posterior probabilities, with Maximum Likelihood bootstrap values shown below branches in square brackets. The WMG sequence that contains all 4 ancestral Polynesian SNPs is highlighted in red. Below each haplogroup label are the nucleotide positions that differentiate the haplogroup from Haplogroup D (*i.e.* Haplogroup D defining SNPs).

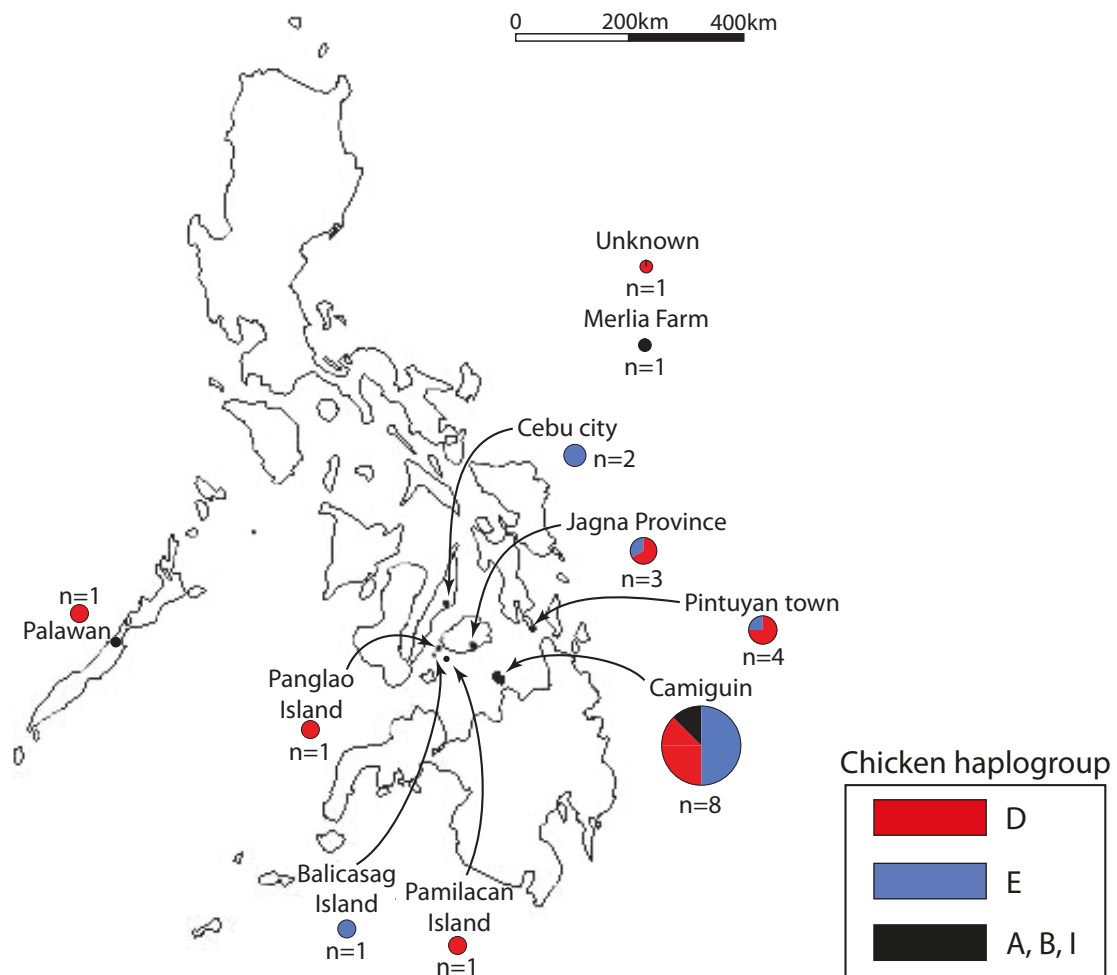


Fig. S3. Map showing haplogroups of chicken samples from the Philippines (n=23).

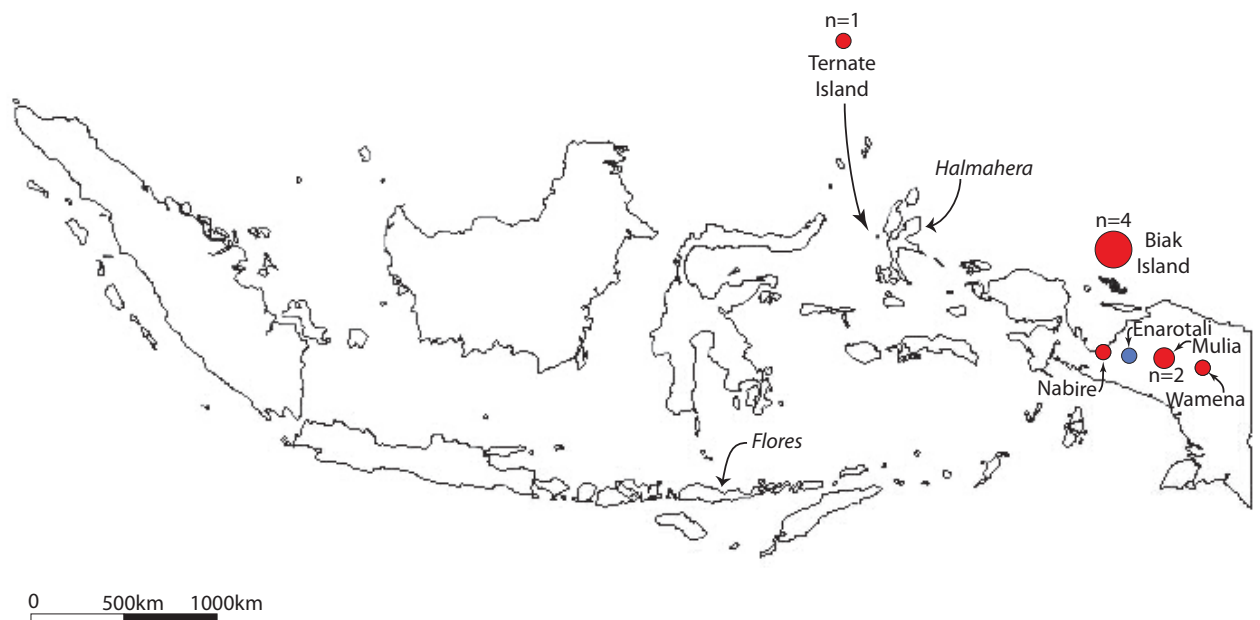


Fig. S4. Map showing haplogroups of chicken samples from the Indonesia (n=10).

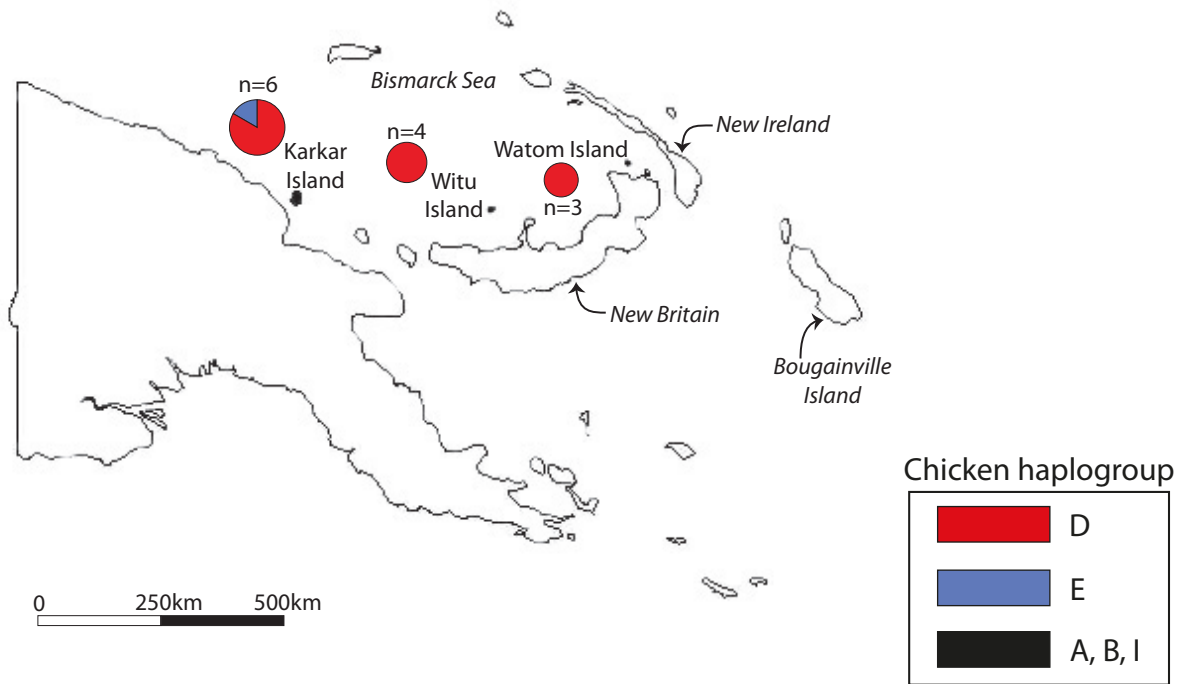


Fig. S5. Map showing haplogroups of chicken samples from the Papua New Guinea (n=13).

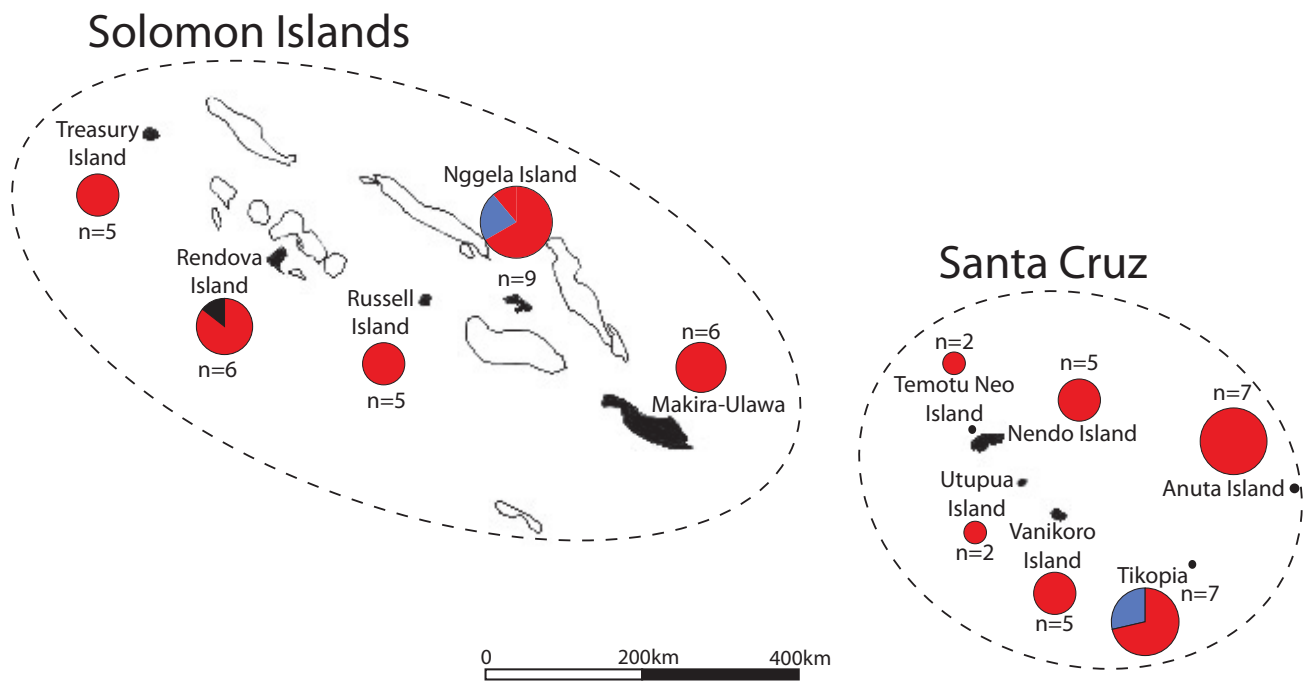


Fig. S6. Map showing haplogroups of chicken samples from the Solomon Islands (n=31) and Santa Cruz (n=28).

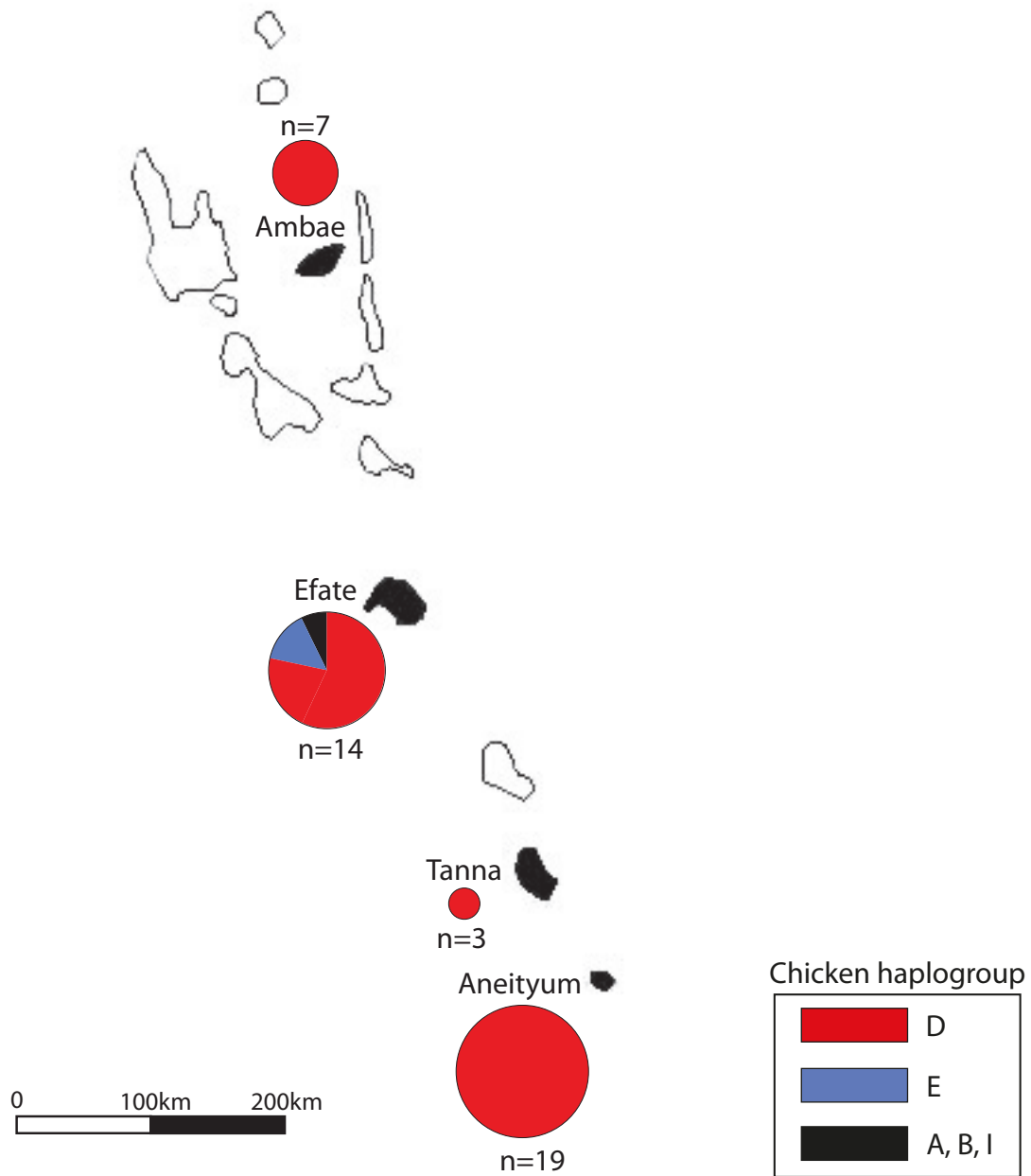


Fig. S7. Map showing haplogroups of chicken samples from the Vanuatu (n=43), Dancause *et al.* (2010).

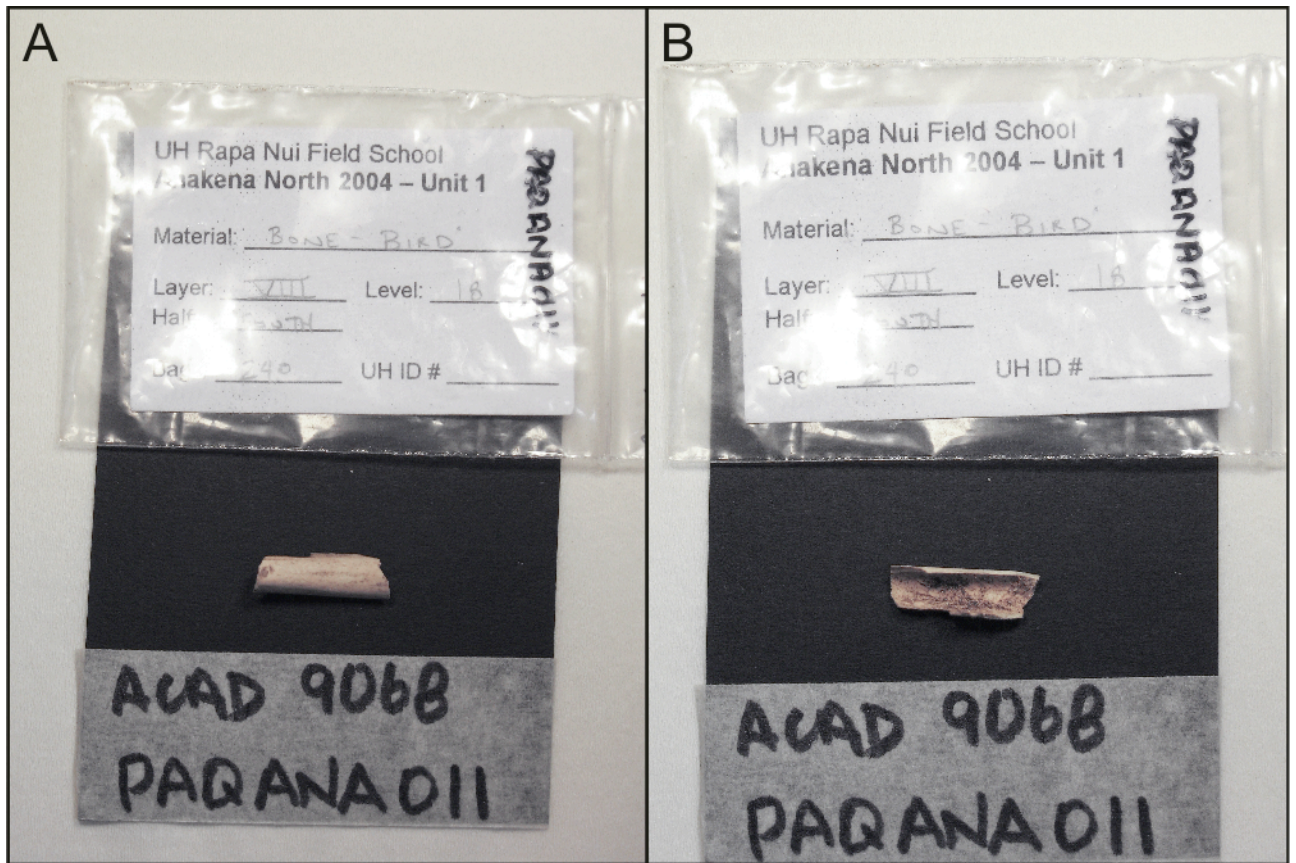


Fig. S8. Photos showing sample PAQANA011, the sample from Rapa Nui that Storey *et al.* (1) found to be Haplogroup E but when re-analyzed for this paper at ACAD and replicated at Durham was actually found to be Haplogroup D. Photo A shows the exterior of the bone and photo B shows the interior of the bone upon arrival at the ACAD lab (*i.e.* prior to subsampling for analysis and replication).

Probability distributions of Haplogroup E in ancient Pacific chickens

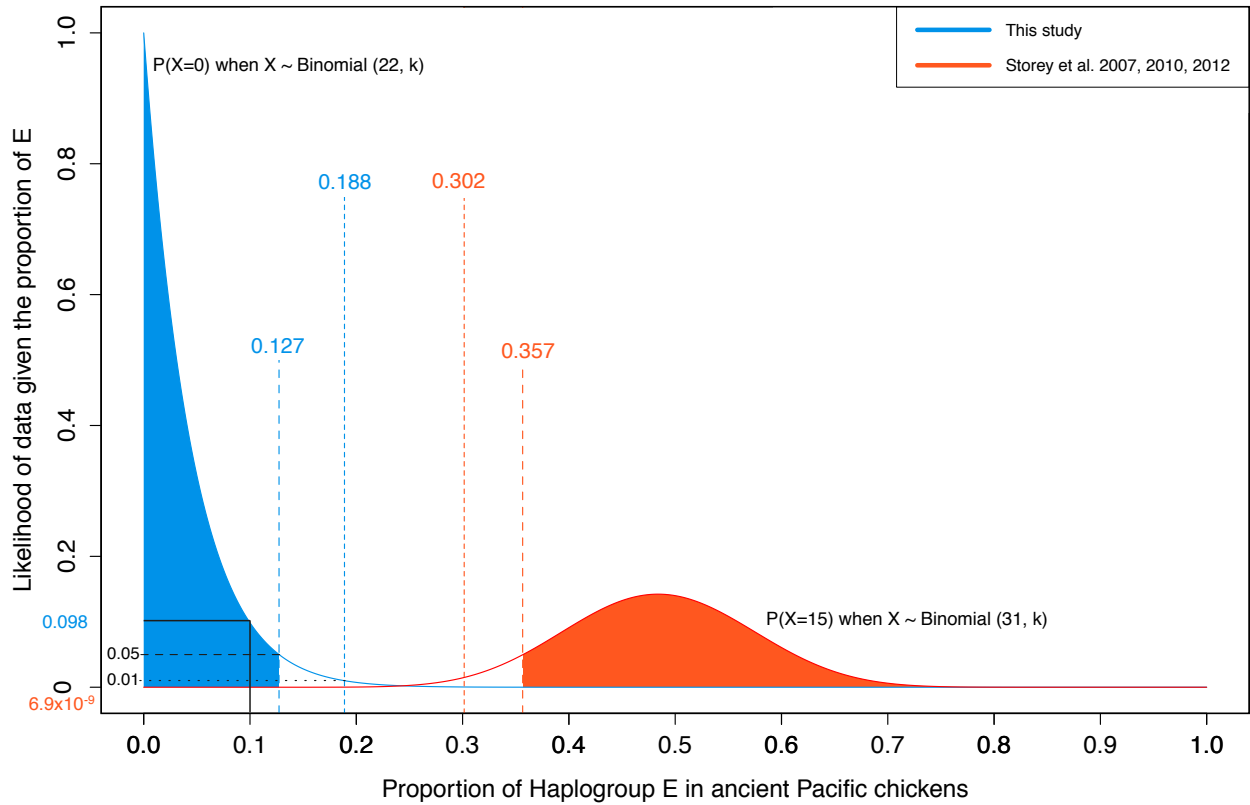


Fig. S9. Binomial probability distribution showing the probability of detecting the observed number of haplogroup E sequences (for a range of hypothetical frequencies of E in the ancient Pacific chicken population). For example, if we assume that haplogroup E is actually present at a frequency of 0.1 (i.e. 10%) in the total ancient population, then the probability of detecting 0/22 haplogroup E sequences is 0.098 (this study), but the probability of Storey *et al.* (1, 25, 26) detecting 15/31 haplogroup E sequences is 6.9×10^{-9} .

Relationship between frequency of 4 SNPs in Pacific chicken populations and degrees longitude

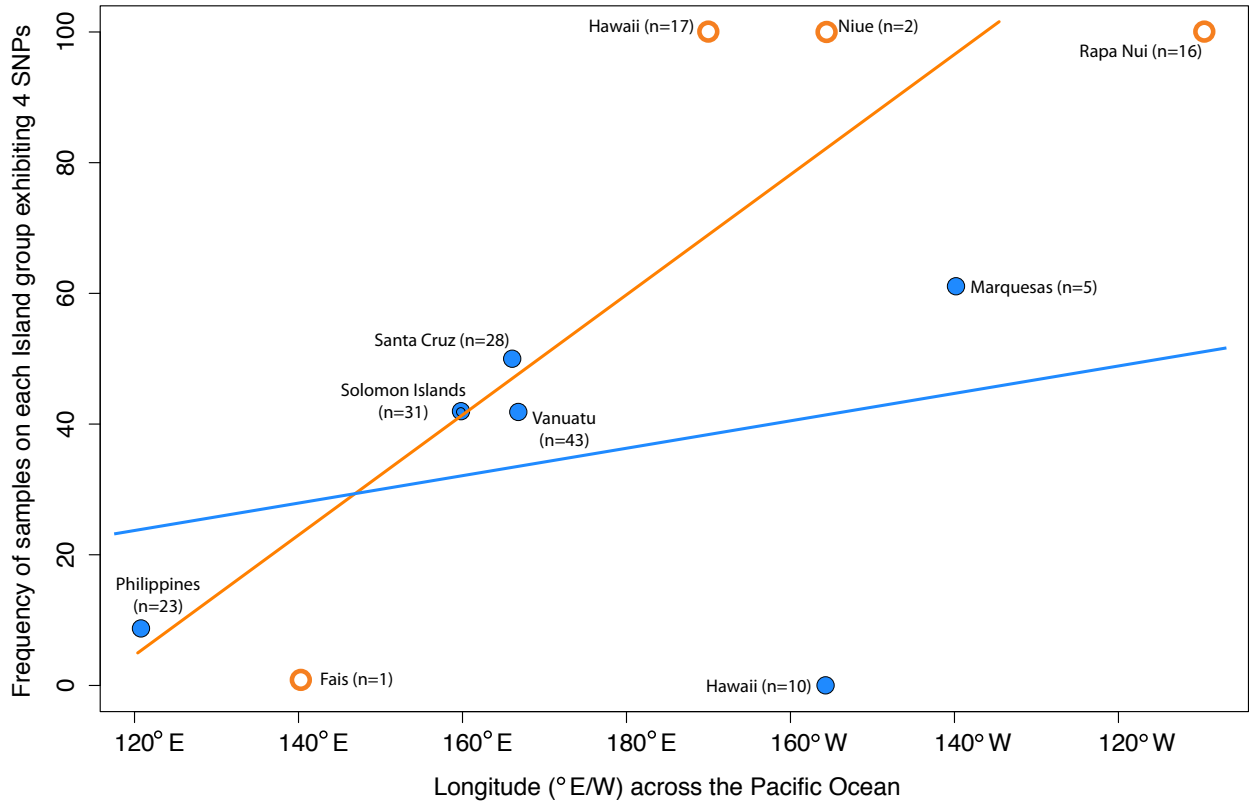


Fig. S10. Linear regression plot showing the positive correlation between frequency of haplotypes with all four diagnostic SNPs and longitude. The higher frequency of these 4 SNPs in the east (right hand side of the graph) is apparent with both modern (blue solid) and ancient (orange outline) samples. With both modern and ancient datasets combined, the correlation is relatively low but the linear relationship is statistically significant ($R^2=0.4201$ and ANOVA P-value = 0.04 for modern and ancient combined). Each island group is labeled with sample numbers in brackets, but note that no ancient haplogroup E samples are included due to suspected issues with authenticity.

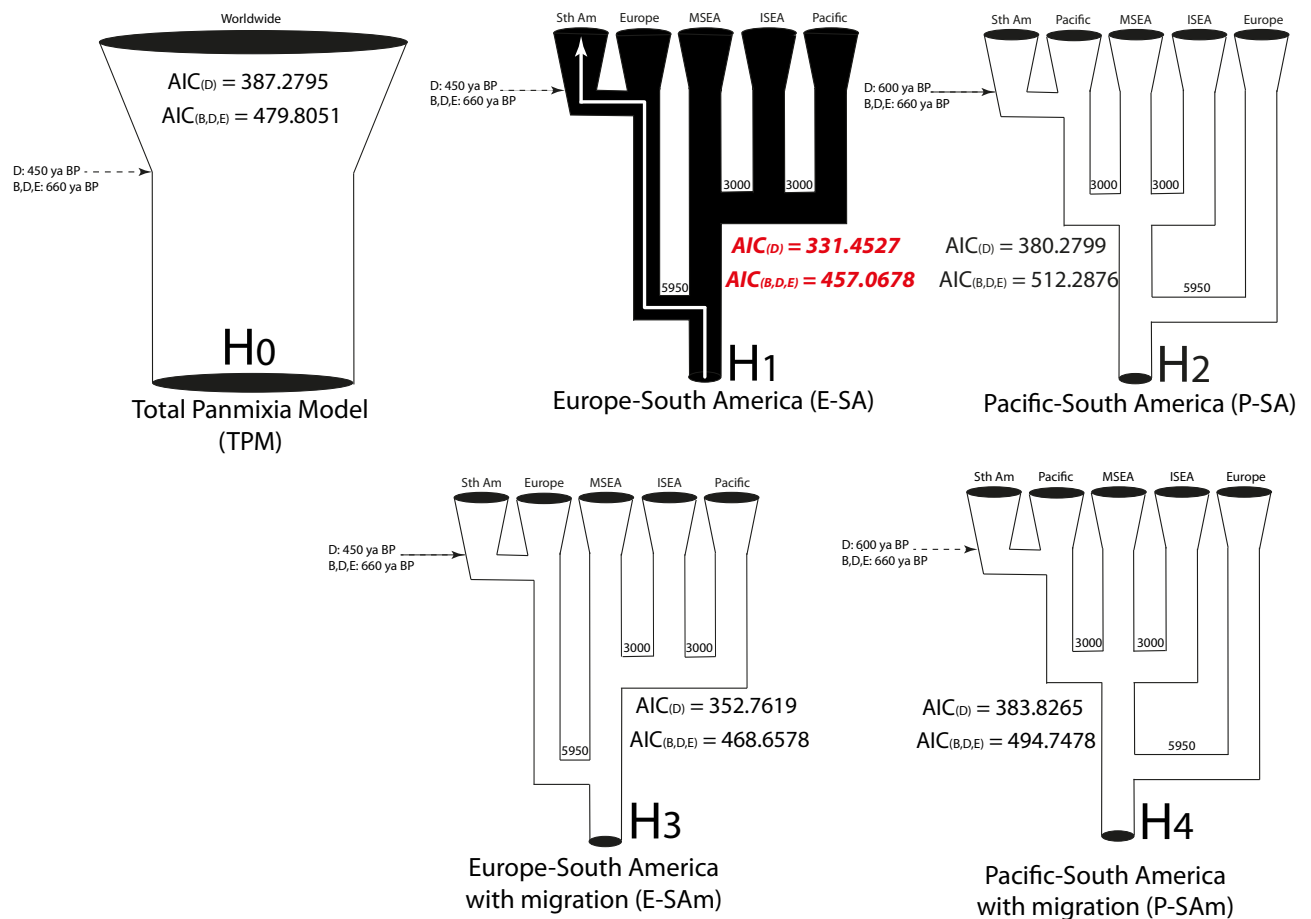


Fig. S11. Serial Coalescent Simulations and Approximate Bayesian Computation models with respect to reconstructing the origin of South American chicken populations. The null hypothesis was modeled as the Total Panmixia Model, TPM (H0). Each population (South America, Europe, MSEA, ISEA, Pacific) was sampled at random from a panmictic population. Eight alternate scenarios were also tested: route from Europe-South America with or without migration, H1 or H3 respectively, with each model having two variations, based on different datasets (only D haplogroup ancient samples or B, D and E haplogroup ancient samples), and a route from Pacific-South America with or without migration, H2 or H4 respectively, with each model having two variations, based on different datasets (only D haplogroup ancient samples or B, D and E haplogroup ancient samples).

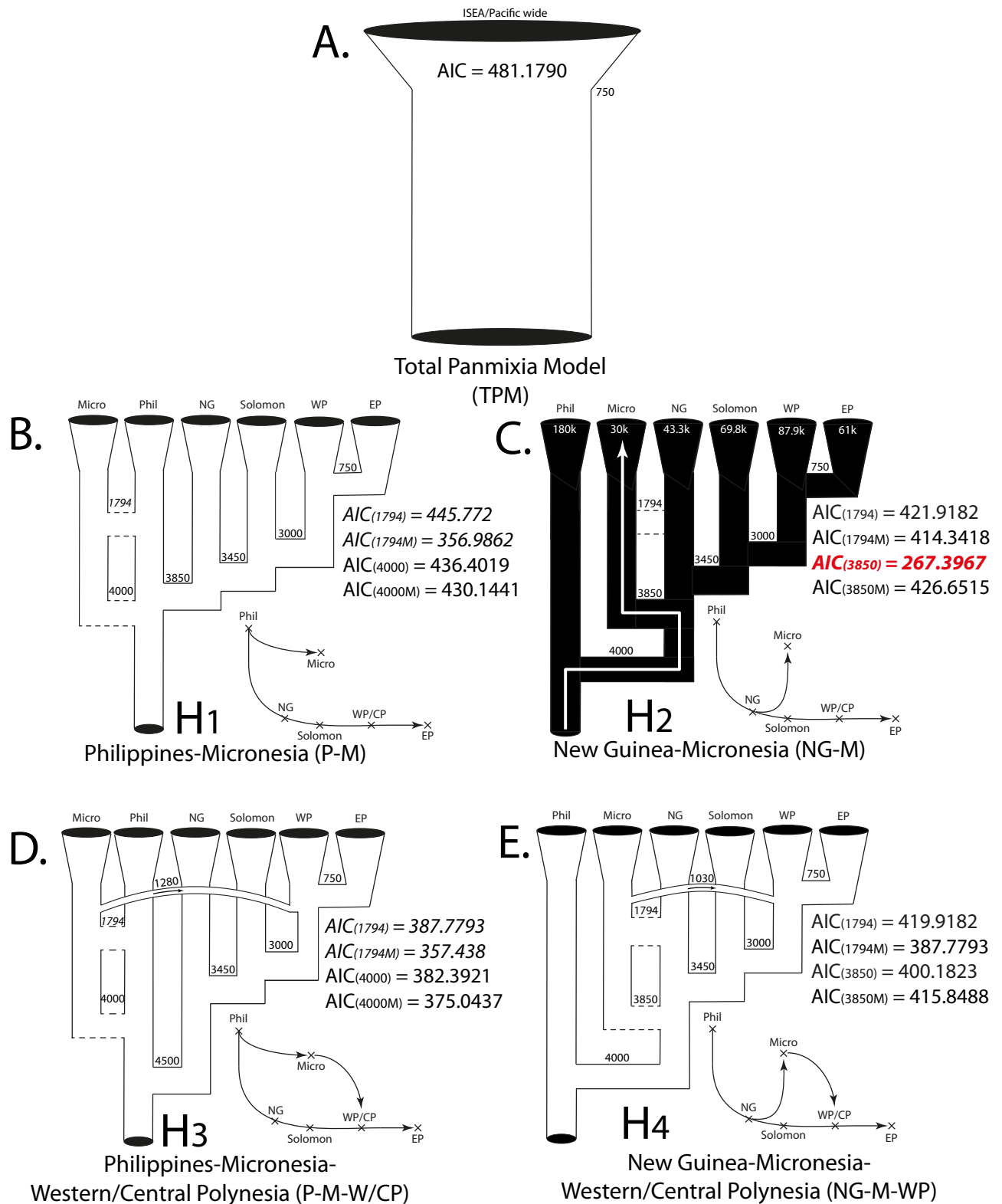


Fig. S12. Serial Coalescent Simulations and Approximate Bayesian Computation models with respect to how Micronesia fits into the wider Pacific story. (A) Total Panmixia Model, TPM. Each population (the Philippines, New Guinea, Micronesia, the Solomon Islands, Western/Central Polynesia, and Eastern Polynesia) was sampled at random from a panmictic population. (B) Philippines-Micronesia model, P-M. This model has four variations, based on two temporal versions for the migration from the Philippines to Micronesia (1794 yrs BP or 4000 yrs BP; dotted lines) and two levels of migration since 750 yrs BP (no migration or a migration matrix; see Table S8). (C) New Guinea-Micronesia, NG-M. This model has four variations, based on two temporal versions for the migration from New Guinea to Micronesia (1794 yrs BP or 3850 yrs BP) and two levels of migration since 750 yrs BP (no migration or a migration matrix; see Table S8). (D) Philippines-Micronesia-Western/Central Polynesia, P-M-W/CP. This model includes a percentage of migration from Micronesia to Western Central Polynesia based on a prior uniform distribution ranging from 750-1794 yrs BP. Again this model has four variations, based on two temporal versions for the

migration from the Philippines to Micronesia (1794 yrs BP or 4000 yrs BP) and two levels of migration since 750 yrs BP (no migration or a migration matrix; see Table S8). (E) New Guinea-Micronesia-Western/Central Polynesia, NG-M-W/CP. This model includes a percentage of migration from Micronesia to Western/Central Polynesia based on a prior uniform distribution ranging from 750-1794 yrs BP. Again this model has four variations, based on two temporal versions for the migration from the Philippines to Micronesia (1794 yrs BP or 4000 yrs BP) and two levels of migration since 750 yrs BP (no migration or a migration matrix; see Table S8).

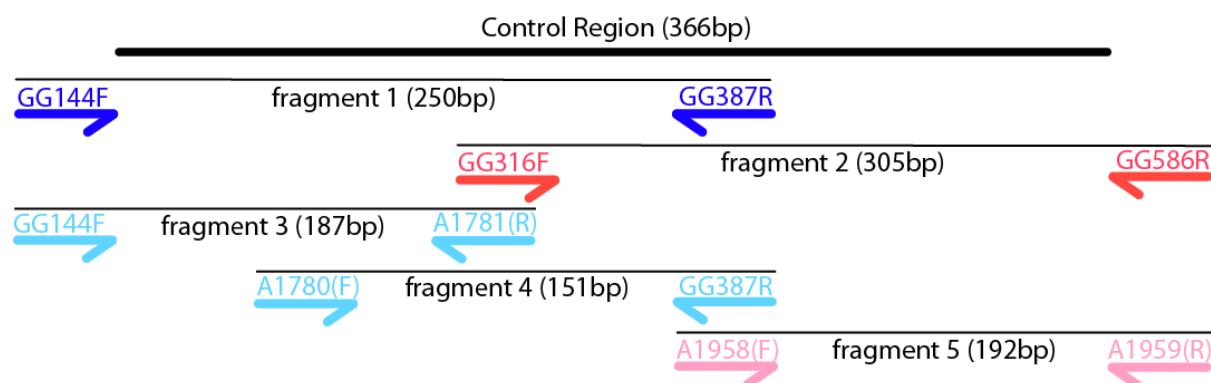


Fig. S13. Details of primer arrangement showing the 366 bp target region, prior to trimming sequences to the length common across both ancient and modern datasets (201 bp). This hyper-variable 201 bp portion of the control region is within fragment 1.

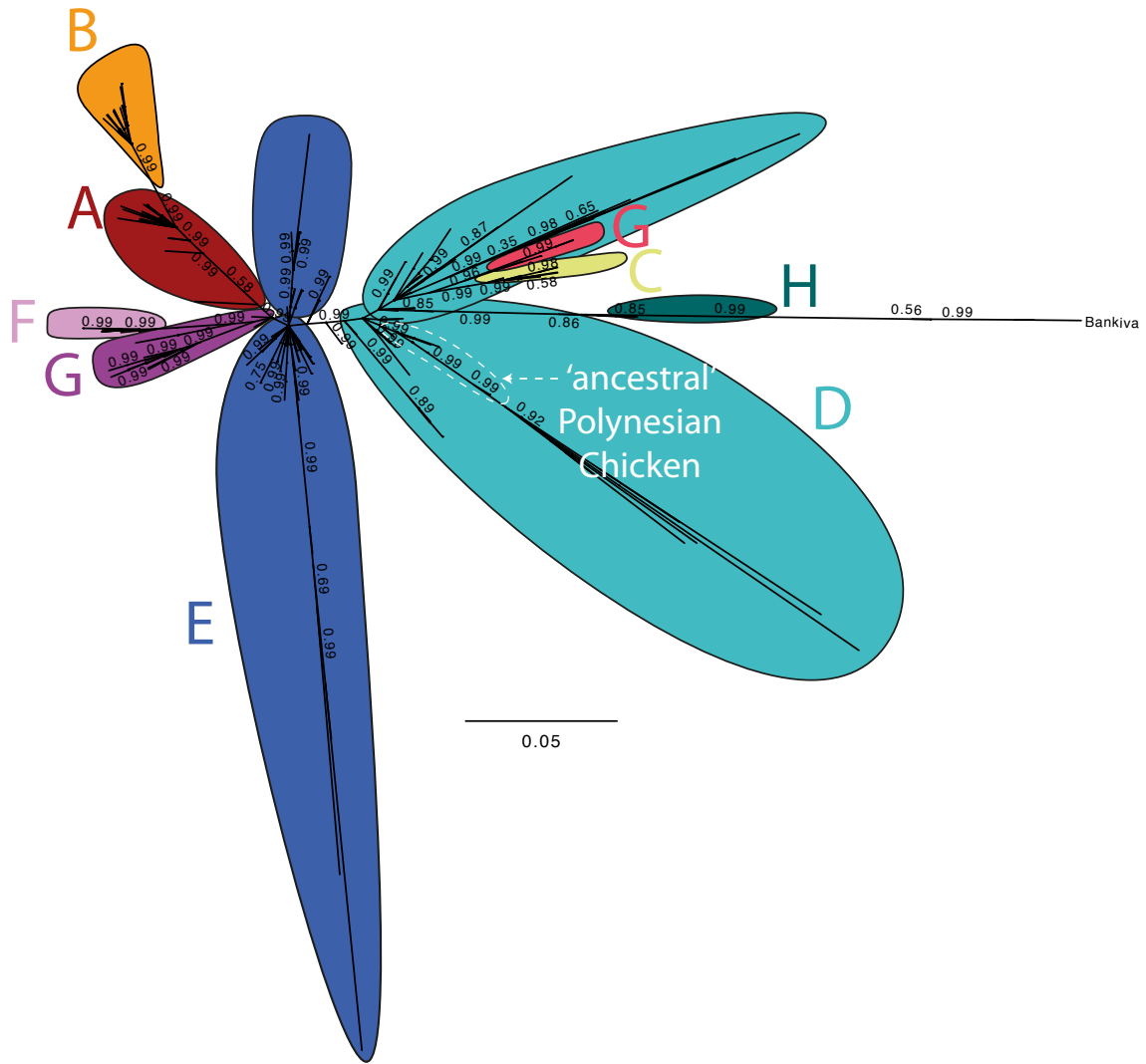


Fig. S14. Maximum Likelihood tree constructed using PhyML with 330bp of mitochondrial control region (mtDNA CR) for 1254 *Gallus gallus* sequences worldwide (see [Dataset S6](#) for list of samples), with *G. g. bankiva* as an outgroup. All 1226 modern sequences used for reference purposes were included, plus the 22 ancient Pacific bone samples and 6 modern feather samples from the Marquesas, as only these were sequenced for the 330 bp fragment of the mtDNA CR. Colors and labels in this figure represent each of the nine worldwide chicken haplogroups initially identified in Liu *et al.* (13), with the addition of our ‘ancestral’ Polynesian chicken group. The support values on branches are estimated using a Chi²-based approximate Likelihood Ratio Test (aLRT) – the ‘ancestral’ Polynesian chicken group has branch support of 0.999.

Dataset S1 - Location and dating information for the chicken samples successfully analyzed in this study, plus Storey *et al.*'s (1, 25, 26) and Dancause *et al.* (10) Pacific samples (see <http://dx.doi.org/10.6084/m9.figshare.897928>).

Dataset S2 – Summary of Pacific samples from this study plus those from Storey *et al.* (1, 25, 26) without the use of Shrimp DNase, and the presence of the ancient haplotypes in modern chicken populations (see <http://dx.doi.org/10.6084/m9.figshare.897927>).

Dataset S3 – Replication of PAQANA011 - internal (extract ACAD9068 using repeated PCR and Sanger sequencing) and external (at Durham University), and compared to Storey *et al.*'s (2007) EF535246 (PAQANA011) sequence (see <http://dx.doi.org/10.6084/m9.figshare.897929>).

Dataset S4 – Cloning results of ACAD internal replication and external replication at Durham (see <http://dx.doi.org/10.6084/m9.figshare.897930>).

Dataset S5 – Variable sites across all unique haplotypes with number of 'Polynesian' SNPs (columns with PSNPs are highlighted by dark outline) (see <http://dx.doi.org/10.6084/m9.figshare.897932>).

Dataset S6 - Unique haplotype details of all sequences used in the study (see <http://dx.doi.org/10.6084/m9.figshare.897931>).

References

1. Storey AA, *et al.* (2007) Radiocarbon and DNA evidence for a pre-Columbian introduction of Polynesian chickens to Chile. *Proc Natl Acad Sci U S A* 104(25):10335-10339.
2. Cooper A & Poinar HN (2000) Ancient DNA: Do it right or not at all. *Science* 289(5482):1139.
3. Pfeiffer I, *et al.* (2004) Forensic DNA-typing of dog hair: DNA-extraction and PCR amplification. *Forensic Sci Int* 141:149-151.
4. Drummond AJ, *et al.* (2011) Geneious v5.4.
5. Lanfear R, *et al.* (2012) PartitionFinder: Combined selection of partitioning schemes and substitution models for phylogenetic analyses. *Mol Biol Evol* 29(6):1695-1701.
6. Ronquist F, *et al.* (2012) MrBayes 3.2: Efficient Bayesian phylogenetic inference and model choice across a large model space. *Syst Biol* 61(3):539-542.
7. Stamatakis A (2006) RAxML-VI-HPC: maximum likelihood-based phylogenetic analyses with thousands of taxa and mixed models. *Bioinformatics* 22(21):2688-2690.
8. Adebambo A, *et al.* (2010) Lack of phylogeographic structure in Nigerian village chickens revealed by mitochondrial DNA D-loop sequence analysis. *International Journal of Poultry Science* 9(5):503-507.
9. Berthouly-Salazar C, *et al.* (2010) Vietnamese chickens: a gate towards Asian genetic diversity. *BMC genetics* 11:53.
10. Dancause KN, *et al.* (2011) Characterizing genetic diversity of contemporary Pacific chickens using mitochondrial DNA analyses. *PLoS ONE* 6(2):e16843.
11. Gongora J, *et al.* (2008) Indo-European and Asian origins for Chilean and Pacific chickens revealed by mtDNA. *Proc Natl Acad Sci U S A* 105(30):10308-10313.
12. Kanginakudru S, *et al.* (2008) Genetic evidence from Indian red jungle fowl corroborates multiple domestication of modern day chicken. *BMC Evol Biol* 8:174.
13. Liu YP, *et al.* (2006) Multiple maternal origins of chickens: Out of the Asian jungles. *Molecular Phylogenetics and Evolution* 38(1):12-19.
14. Muchadeyi FC, *et al.* (2008) Mitochondrial DNA D-loop sequences suggest a Southeast Asian and Indian origin of Zimbabwean village chickens. *Animal Genetics* 39(6):615-622.
15. Mwacharo JM, *et al.* (2011) Mitochondrial DNA reveals multiple introductions of domestic chicken in East Africa. *Molecular Phylogenetics and Evolution* 58(2):374-382.
16. Oka T, *et al.* (2007) Analysis of mtDNA sequences shows Japanese native chickens have multiple origins. *Animal Genetics* 38(3):287-293.
17. Silva P, *et al.* (2009) Mitochondrial DNA-based analysis of genetic variation and relatedness among Sri Lankan indigenous chickens and the Ceylon junglefowl (*Gallus lafayetti*). *Animal Genetics* 40(1):1-9.

18. Barker FK, *et al.* (2012) Contrasting evolutionary dynamics and information content of the Avian mitochondrial control region and ND2 gene. *PLoS ONE* 7(10):e46403.
19. Langford SM, *et al.* (2013) Australian and Pacific contributions to the genetic diversity of Norfolk Island feral chickens. *BMC genetics* 14:91.
20. Storey AA, *et al.* (2013) Polynesian chickens in the New World: a detailed application of a commensal approach. *Archaeology in Oceania* 48(2):101-119.
21. Guindon S, *et al.* (2010) New algorithms and methods to estimate Maximum-Likelihood phylogenies: Assessing the performance of PhyML 3.0. *Syst Biol* 59(3):307-321.
22. Keane TM, *et al.* (2006) Assessment of methods for amino acid matrix selection and their use on empirical data shows that ad hoc assumptions for choice of matrix are not justified. *BMC Evol Biol* 6(29):1-17.
23. Huson DH & Bryant D (2006) Application of phylogenetic networks in evolutionary studies. *Mol Biol Evol* 23(2):254-267.
24. Bandelt HJ, *et al.* (1999) Median-joining networks for inferring intraspecific phylogenies. *Mol Biol Evol* 16(1):37-48.
25. Storey AA, *et al.* (2012) Investigating the global dispersal of chickens in prehistory using ancient mitochondrial DNA signatures. *PLoS ONE* 7(7):e39171.
26. Storey AA, *et al.* (2010) Mitochondrial DNA from 3000-year old chickens at the Teouma site, Vanuatu. *J Archaeol Sci* 37(10):2459-2468.
27. R development core team (2011) R: A language and environment for statistical computing (R foundation for statistical computing, Retrieved from <http://www.r-project.org>).
28. Excoffier L & Lischer H (2010) Arlequin suite ver3.5: A new series of programs to perform population genetics analyses under Linux and Windows. 10:564-567.
29. Anderson CNK, *et al.* (2005) Serial SimCoal: A population genetics model for data from multiple populations and points in time. *Bioinformatics* 21(8):1733-1734.
30. Paabo S, *et al.* (2004) Genetic analyses from ancient DNA. *Annu Rev Genet* 38:645-679.
31. USB (2006) Shrimp DNase, Recombinant. ed Corporation U (USB Corporation, Cleveland), pp 1-2.
32. Leonard J, *et al.* (2007) Animal DNA in PCR reagents plagues ancient DNA research. *J Archaeol Sci* 34(9):1361-1366.
33. Robins JH, *et al.* (2001) Hit or miss? Factors affecting DNA preservation in Pacific archaeological material. *Australasian Connections and New Directions: Proceedings of the 7th Australasian Archaeometry Conference*, eds Jones M & Sheppard P (University of Auckland), pp 295-305.
34. Halloran AF & Halloran AG (1969) The feral chickens (Phasianidae) of French Polynesia. *Proceedings of the Oklahoma Academy of Sciences* 49:169-170.
35. Ellis W (1831) *Polynesian researches: during a residence of nearly eight years in the Society and Sandwich Islands* (Henry G. Bohn, London).
36. Kirch P (2000) *On the Road of the Winds: An Archaeological History of the Pacific Islands Before European Contact* (University of California Press, Berkeley).
37. Intoh M (1996) Multi-regional contacts of prehistoric Fais Islanders in Micronesia. *Indo-Pacific Prehistory: The Chiang Mai Papers*, eds Glover IC & Bellwood B (Australian National University, Canberra), Vol 2, pp 111-118.
38. McNiven IJ, *et al.* (2011) New direction in human colonisation of the Pacific: Lapita settlement of south coast New Guinea. *Australian Archaeology* 72:1-6.
39. Gillespie R, *et al.* (2012) Man and megafauna in Tasmania: closing the gap. *Quat Sci Rev* 37:38-47.
40. McCullagh JSO, *et al.* (2006) Analysis of amino acid C-13 abundance from human and faunal bone collagen using liquid chromatography/isotope ratio mass spectrometry. *Rapid Commun Mass Spectrom* 20(18):2761-2768.
41. Storey AA, *et al.* (2008) Pre-Columbian chickens, dates, isotopes, and mtDNA. *Proc Natl Acad Sci U S A* 105(48):E99.
42. Zhou B, *et al.* (2010) Matrilineal components and genetic relationship of Silkies from China and Japan. *Journal of Poultry Science* 47(1):22-27.
43. Miao YW, *et al.* (2013) Chicken domestication: an updated perspective based on mitochondrial genomes. *Heredity* 110(3):277-282.